

Conceptual vignette of crosswalk, visitor facilities, rain gardens, & pervious pavement at Bellevue Community Park (View A)

**Existing Conditions**

The following amenities are presently on site:

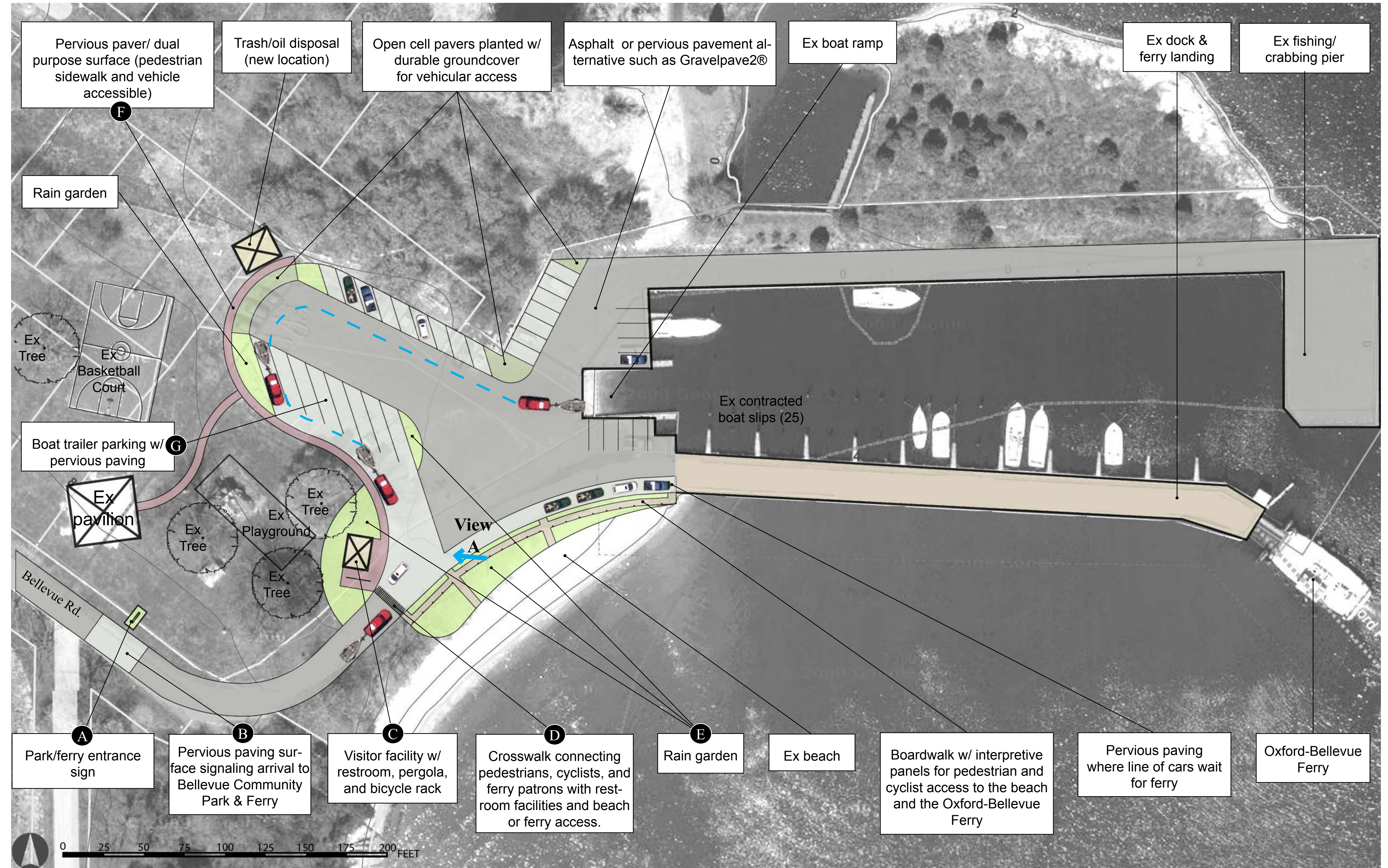
- Oxford-Bellevue Ferry Landing
- boat ramp
- 25 contracted boat slips
- fishing/crabbing pier
- park pavilion w/ picnic tables & grill
- basketball court
- portable toilets (3)
- small beach
- Oxford- St. Michaels Bike Trail
- waste & oil disposal facility
- parking for vehicles w/ trailers
- standard parking



Existing Conditions at Bellevue Community Park (View A)

**Site Improvement Opportunities** (see corresponding plan at right)

- Ⓐ Install Bellevue Community Park & Oxford Bellevue Ferry Landing Sign at park entrance with plantings
- Ⓑ Introduce pervious paving at entry sign as a change in surface to indicate that visitors have entered the site
- Ⓒ Introduce a visitor facility to include restrooms, bicycle racks, and wayfinding for bicyclists, ferry and park patrons
- Ⓓ Provide a tinted, textured, pervious surface crosswalk for pedestrians, bicyclists, and ferry patrons to safely access the boardwalk with interpretive panels, beach, and ferry dock
- Ⓔ Install rain gardens at the boardwalk and throughout the parking area to filter runoff contaminated by vehicle and boat wastes
- Ⓕ Install a pervious paver dual purpose sidewalk to accommodate for pedestrian access and occasional vehicular access
- Ⓖ Reconfigure existing parking to allow for pull-through boat trailer parking and introduce pervious paving



Conceptual Plan for Bellevue Community Park & Oxford-Bellevue Ferry Landing

**Gravelpave2®**

- flexible porous pavement composed of gravel and load bearing grid structure
- used in parking and boat ramp applications
- designed to withstand high frequency traffic on a daily basis

**Open Cell Pavers**

- honeycomb or lattice grid formation of concrete blocks with grass or gravel located between gaps
- grid structure supports vehicular use
- incorporation of vegetation offers a unique aesthetic

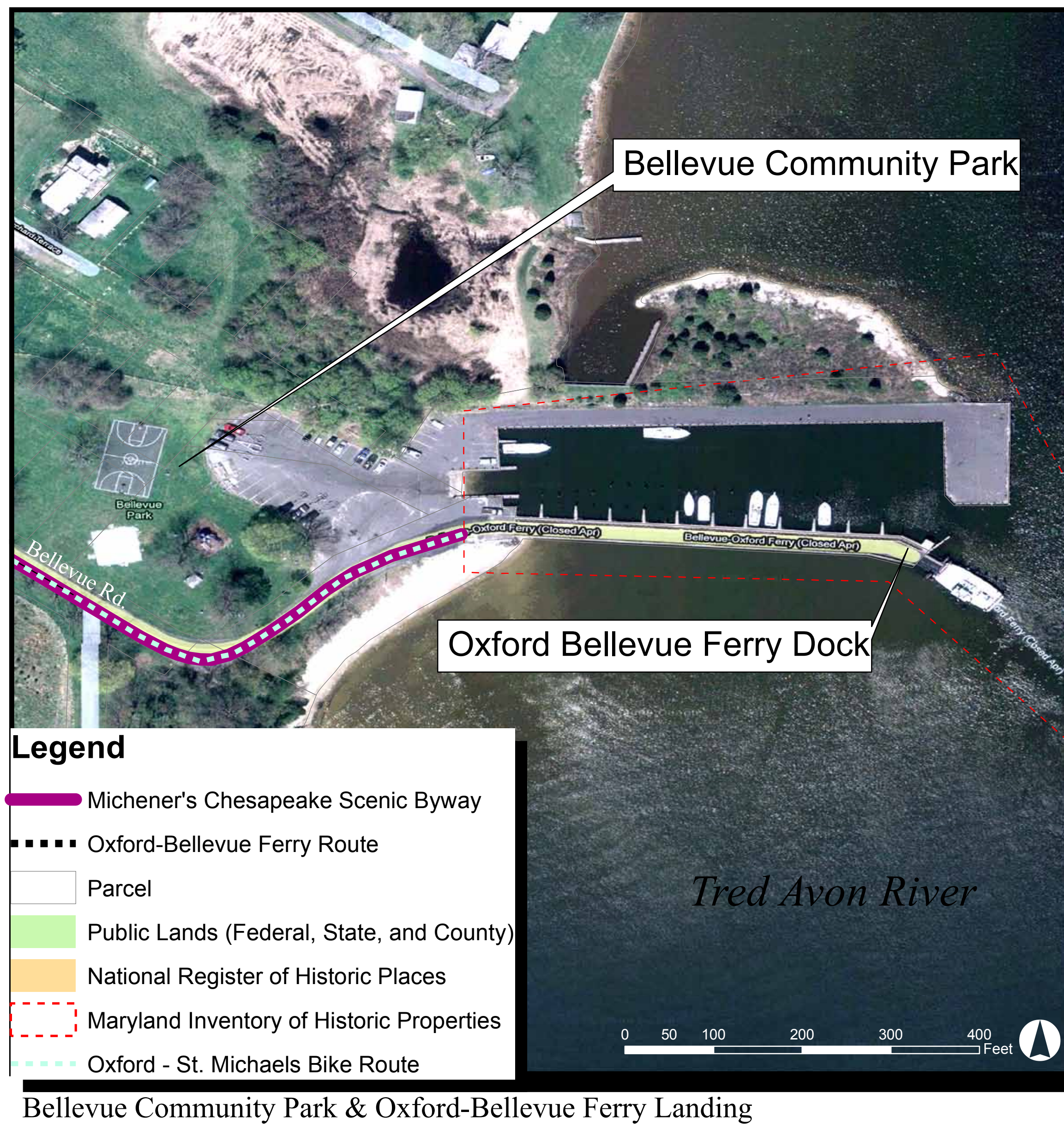
**Pervious Pavers**

- a system of modular concrete pavers fitting together to form gaps through which storm-water enters and then filters through layers of sand and gravel
- used in parking and boat ramp applications
- a variety of colors and styles available

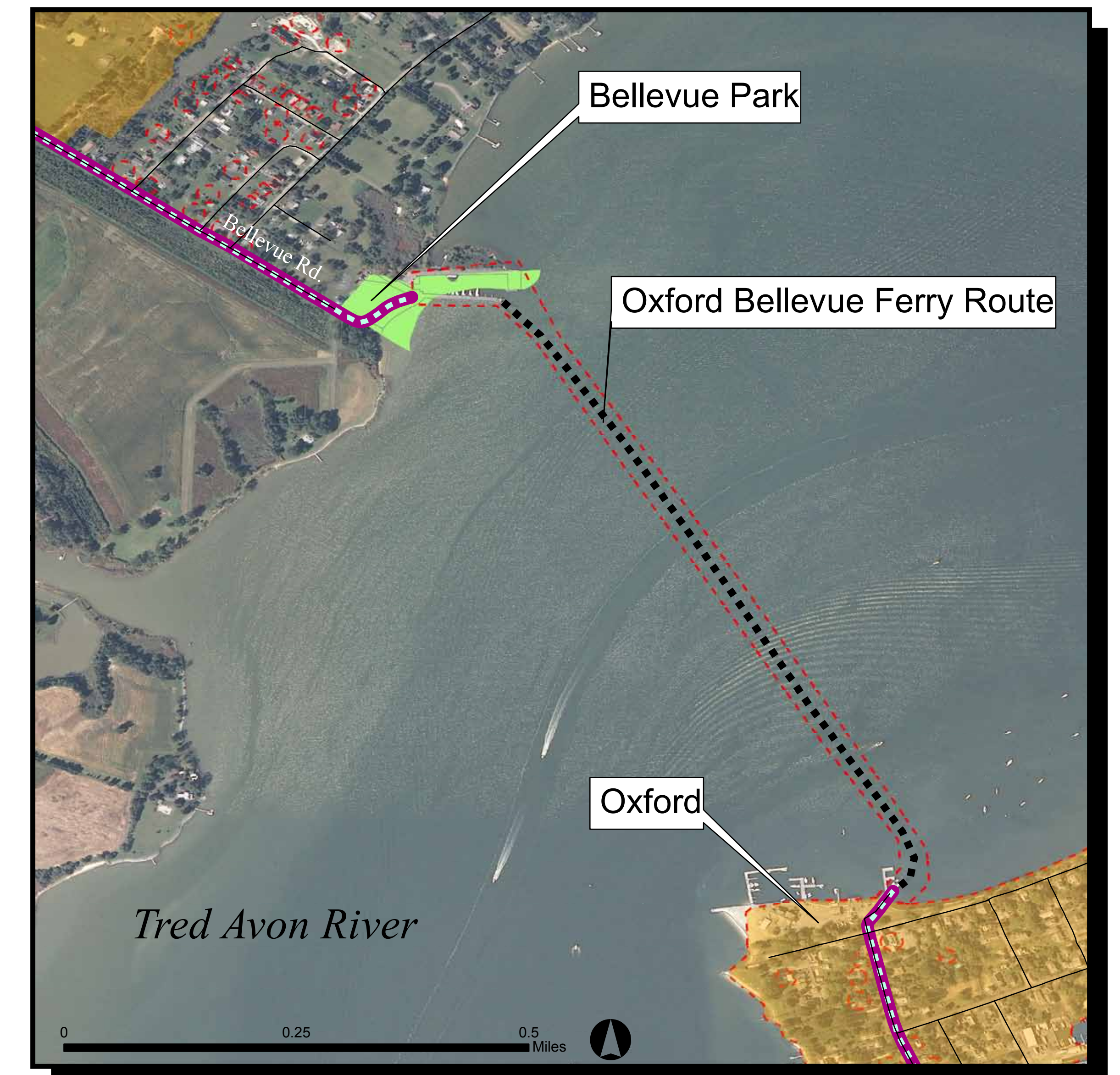
**Case Study: Bellevue Park & Ferry Landing**

**Michener's Chesapeake Scenic Byway Corridor Management Plan** DRAFT 01.25.11  
**Queen Anne's, Talbot, Caroline & Dorchester Counties, MD**

**Lardner/Klein Landscape Architects, P.C.**  
 in association with Shelley Mastran, the National Trust for Historic Preservation, John Milner Associates, Inc., and Daniel Consultants, Inc.  
 GIS Sources: MD DNR, MD SHA, Chesapeake Bay Program, Maryland Historical Trust



Bellevue Community Park & Oxford-Bellevue Ferry Landing



Oxford-Bellevue Ferry Route on the Tred Avon River