



Conceptual vignette of pull-off across from the Exeter House. (View A)

Existing Conditions

The following features are presently on site:

- National Register of Historic Places listed Exeter House (private)
- Associated dam and mill pond
- Idylwild Wildlife Management Area (access point)
- located on spine route of Michener's Chesapeake Scenic Byway

Site Improvement Opportunities

Short Term

- Provide a safe, attractive pull-off for visitors to conveniently stop while traveling on the Byway
- Use plantings and other roadside/roadway treatments to indicate special conditions along the Byway
- Install interpretive signage to inform visitors of the historical, cultural, and natural resources that make this an interesting site



Long Term

- Study the potential of providing safe public access to mill pond area

National Register Listed Exeter House, Federalsburg, MD (left)



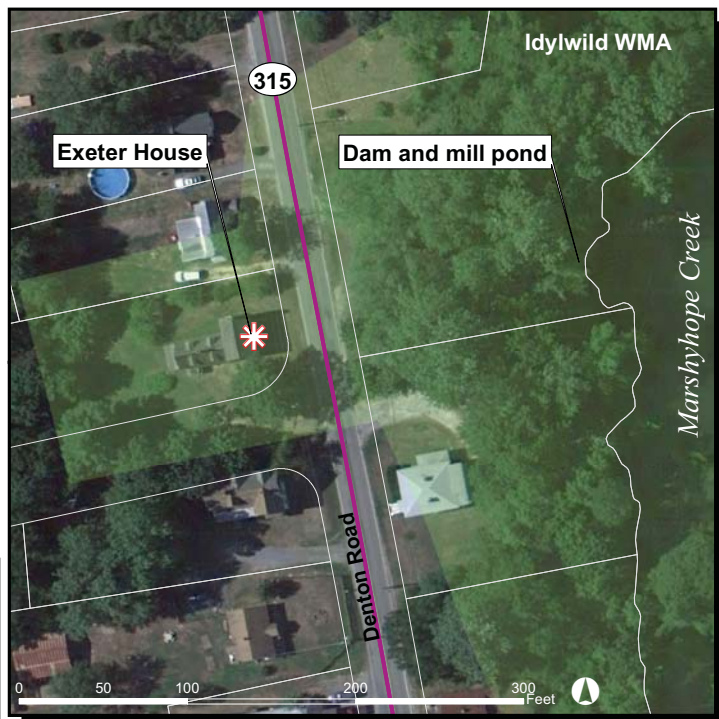
Existing conditions on Denton Rd. across from Exeter House (View A) (above)



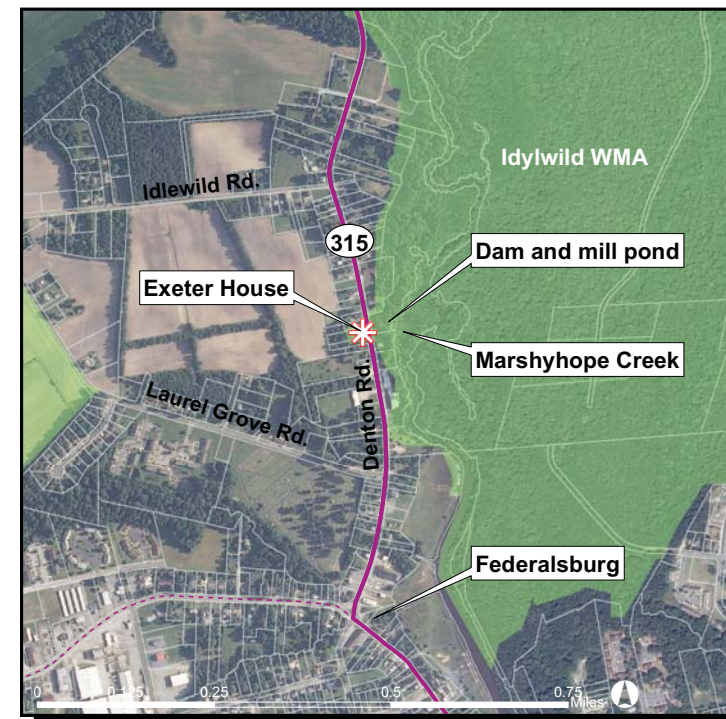
Dam and mill pond across from Exeter House (left)



Conceptual plan for a pull-off with interpretive signage across from the National Register of Historic Places listed Exeter House in Federalsburg, MD.



Exeter House and adjoining dam and mill pond off of Denton Rd.



Context map of Exeter House and adjoining dam and mill pond off of Denton Rd.

Case Study: Exeter Pull-off, Federalsburg



Michener's Chesapeake Country Scenic Byway Corridor Management Plan

DRAFT 10.21.11

Queen Anne's, Talbot, Caroline & Dorchester Counties, MD



Lardner/Klein Landscape Architects, P.C.

in association with Shelley Mastran, the National Trust for Historic Preservation, John Milner Associates, Inc., and Daniel Consultants, Inc.

GIS Sources: MD DNR, MD SHA, Chesapeake Bay Program, Maryland Historical Trust

Michener's Chesapeake Country Scenic Byway

- Spine
- - - Sidetrack
- ▭ Parcel
- ▭ DNR Land
- ✳ National Register of Historic Places Exeter House