

4 Nassau Road to Black Hog Gut NEW ROAD CORRIDOR MASTER PLAN



Assets:

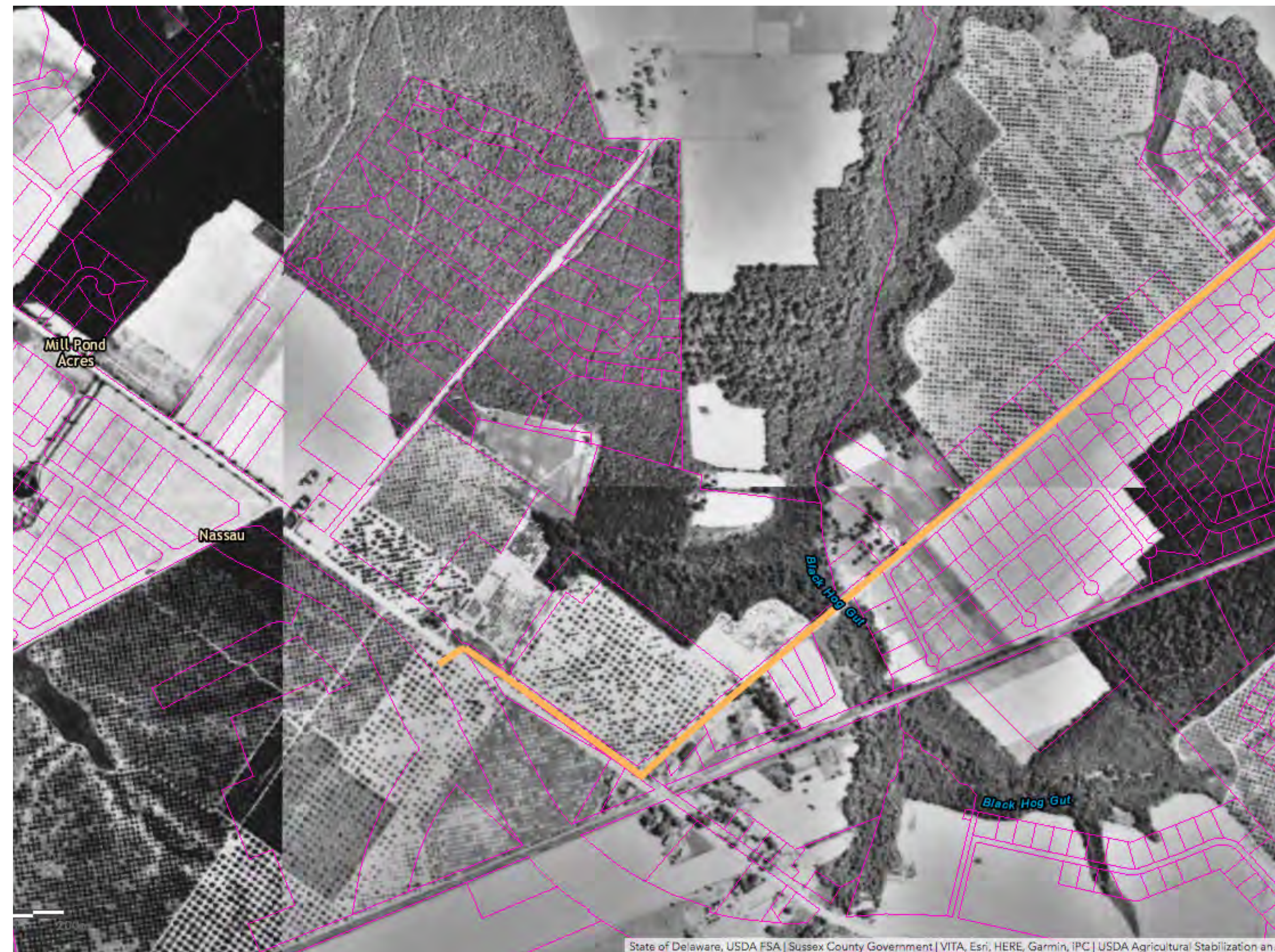
- Businesses
- Farm / Orchard / History
- Trees

Changes & Proposals:

- SR1/Minos-Conaway Project will reconfigure intersection;
- Black Hog Village (Duke property)
-

Opportunities:

- roundabout option could be a positive contribution to gateway;
- Rail-trail connection



New Road circa 1937 showing extent of orchards

Landscape Treatment Ideas



Pollinator/Butterfly/Bird Habitat



Eutrochium fistulosum
(Hollow-stem Joe-pye-weed)



Asclepias incarnata
(Swamp Milkweed)



Quercus bicolor
(Swamp White Oak)

Ideas for Bridge Abutments



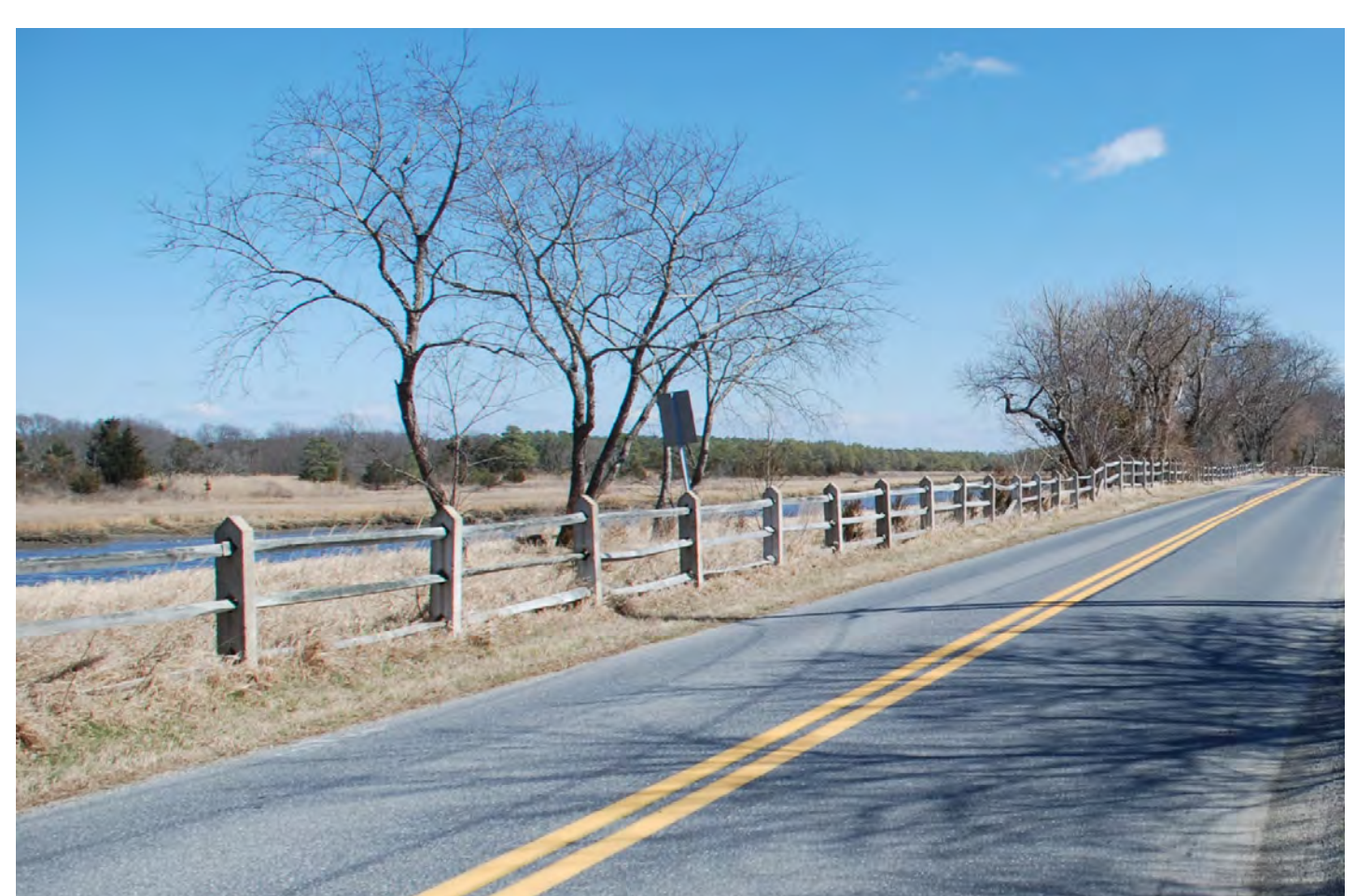
1
3

☐ Brick retaining walls



1
3

☐ Textured Concrete (Stone)



2

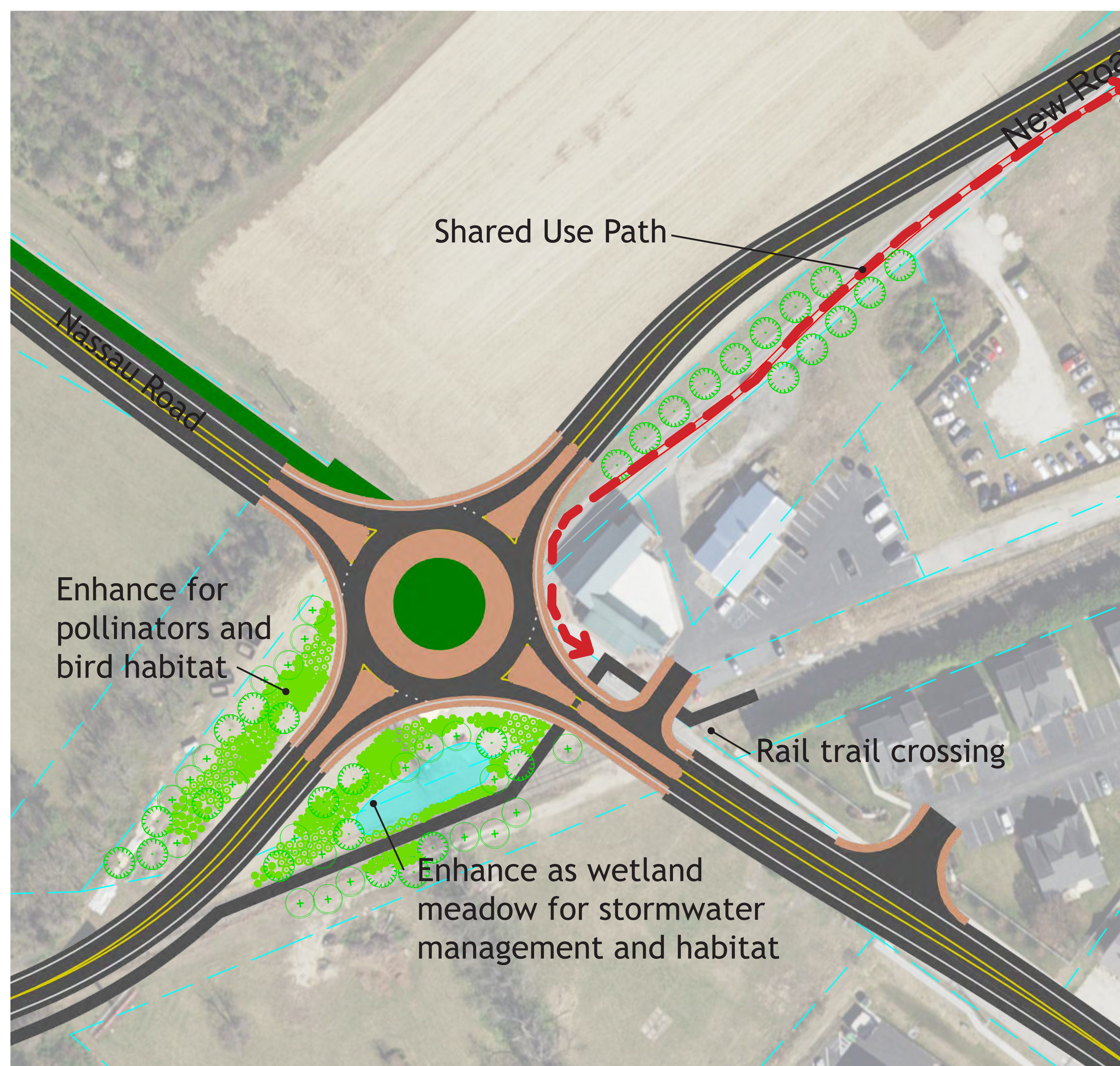
☐ Post and Rail Fencing



1
2

☐ Coastal Landscape

DelDOT Preferred Concept for Roundabout



Minos-Conaway roundabout at Nassau - landscaping concept with pollinator gardens, habitat, and wetland meadow/stormwater management



NOTE: Existing bridge parapet and bridge columns to remain (no changes) - design ideas at left apply to numbered areas below (both sides)

3

1

2

DelDOT preferred concept for Minos Conaway project

Roundabout Aesthetic Treatment Ideas



☐ Bend, OR



☐ Snohomish, WA



☐ Planavagen, Stockholm, SE



☐ Rehoboth, DE