

# 7 Canary Creek to Pilottown Road NEW ROAD CORRIDOR MASTER PLAN



## Assets:

- Canary Creek and Great Marsh (visual and physical access); Park Road suitable for vehicles with boat trailers; adjoining residential neighborhoods

## Changes & Proposals:

- Canary Creek Bridge and approaches to be elevated,
- Increased traffic, anticipated sea level rise on flood-prone areas

## Opportunities:

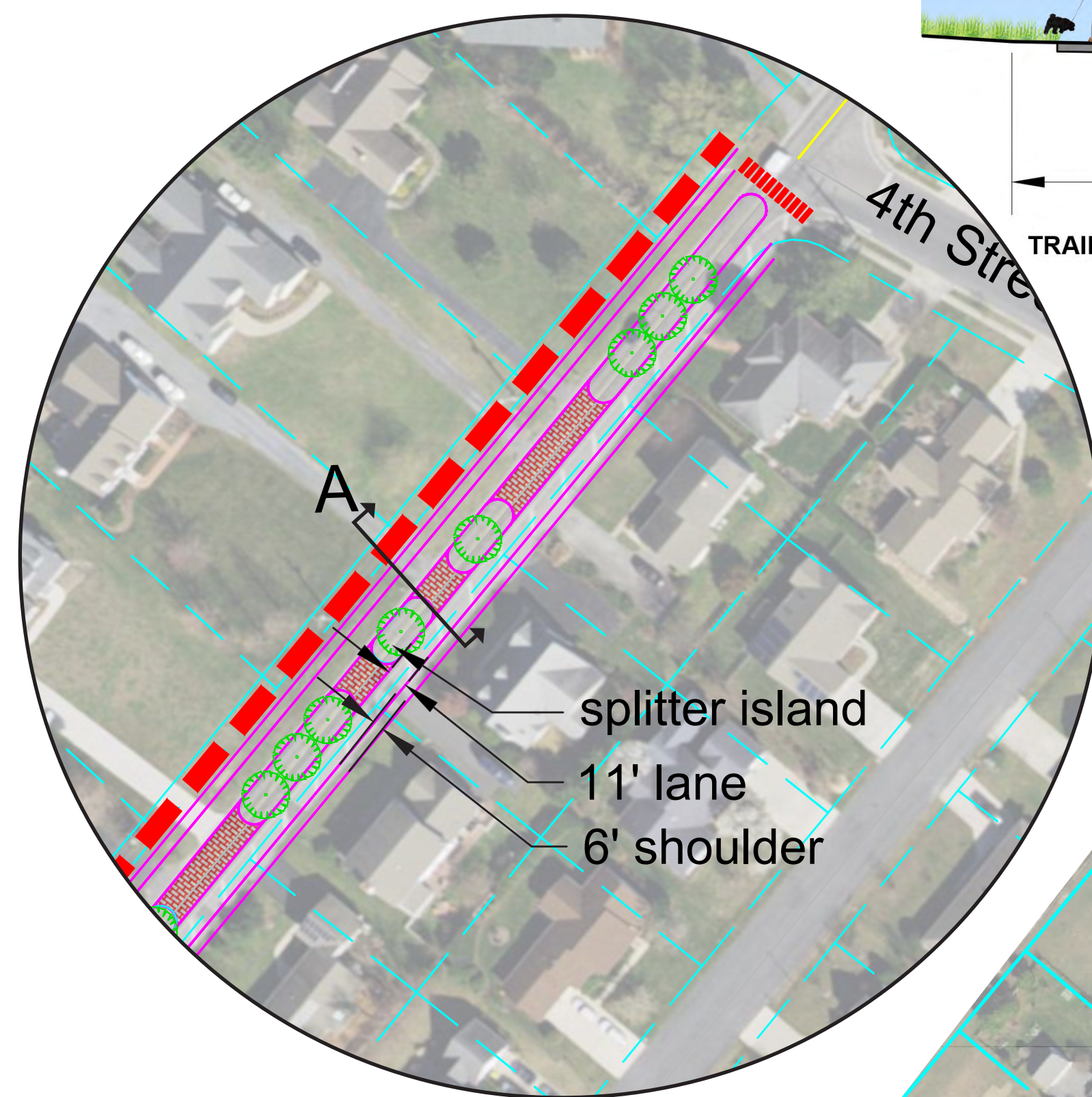
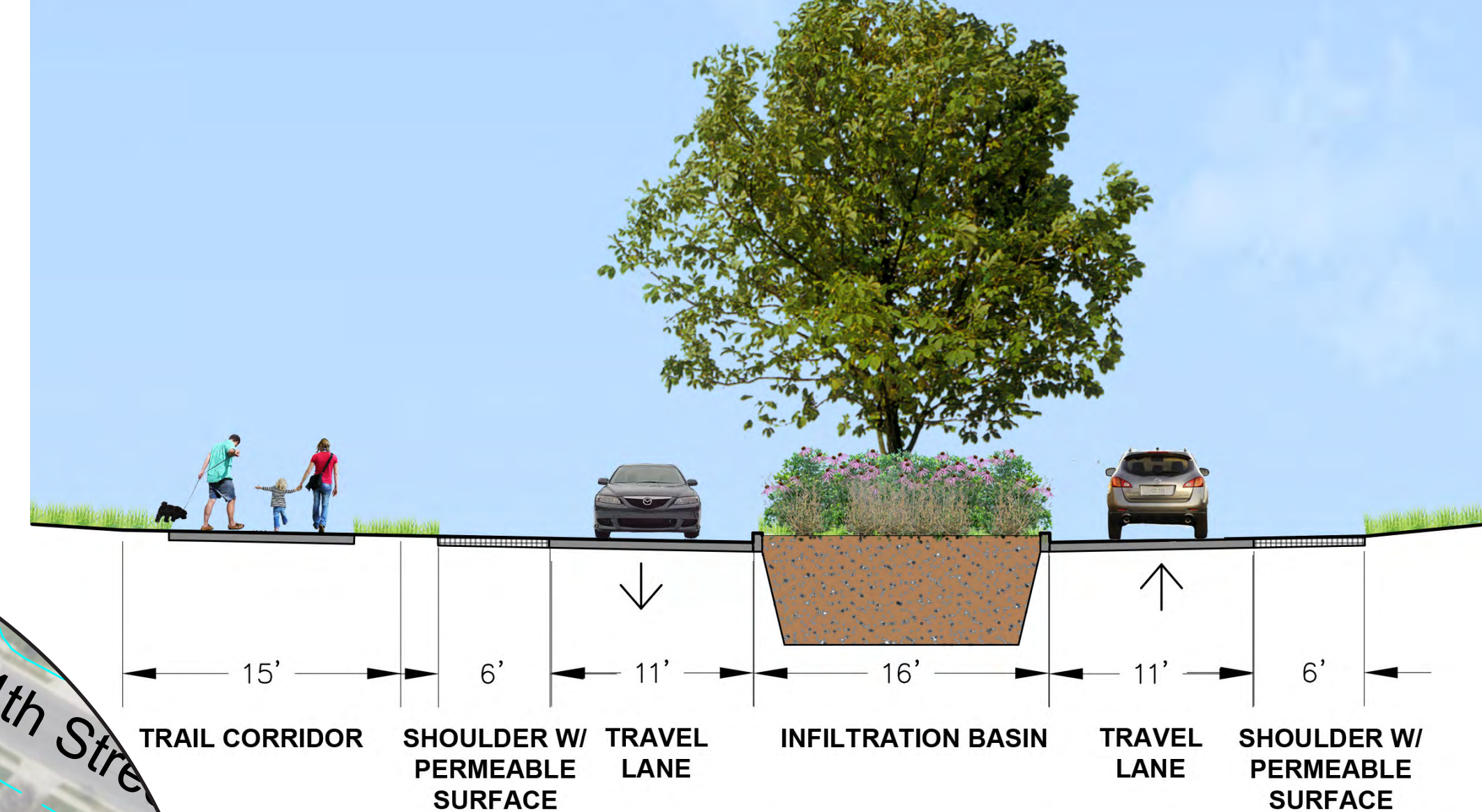
- Reconstruction of New Road Bridge over Canary Creek can also provide recreational access and accommodate share use pathway
- Redesign intersection with Park Road to better direct vehicles with boat trailers away from Pilottown Road intersection
- Address poor drainage and emergency needs

## Traffic Calming Concept Approaching 4th Street (w/infiltration)



courtesy of Marta Namack

### Section A - Infiltration Basin Splitter Islands



15' TRAIL CORRIDOR 6' SHOULDER W/ PERMEABLE SURFACE 11' TRAVEL LANE 16' INFILTRATION BASIN 11' TRAVEL LANE 6' SHOULDER W/ PERMEABLE SURFACE

4th Street



## Bridge Ideas



Paris Pike, KY



Wisconsin DOT

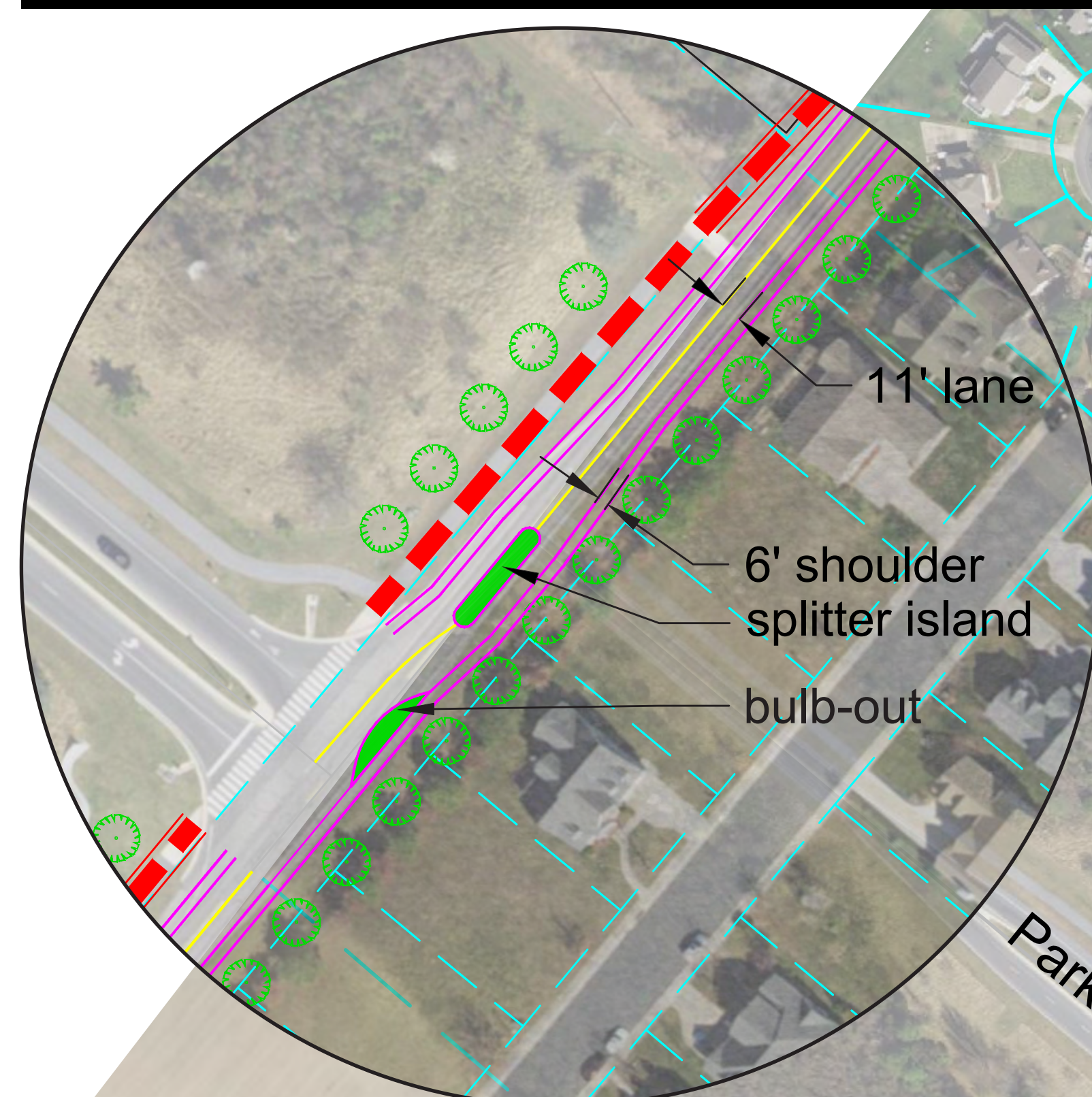


Arcolo Bridge, PA

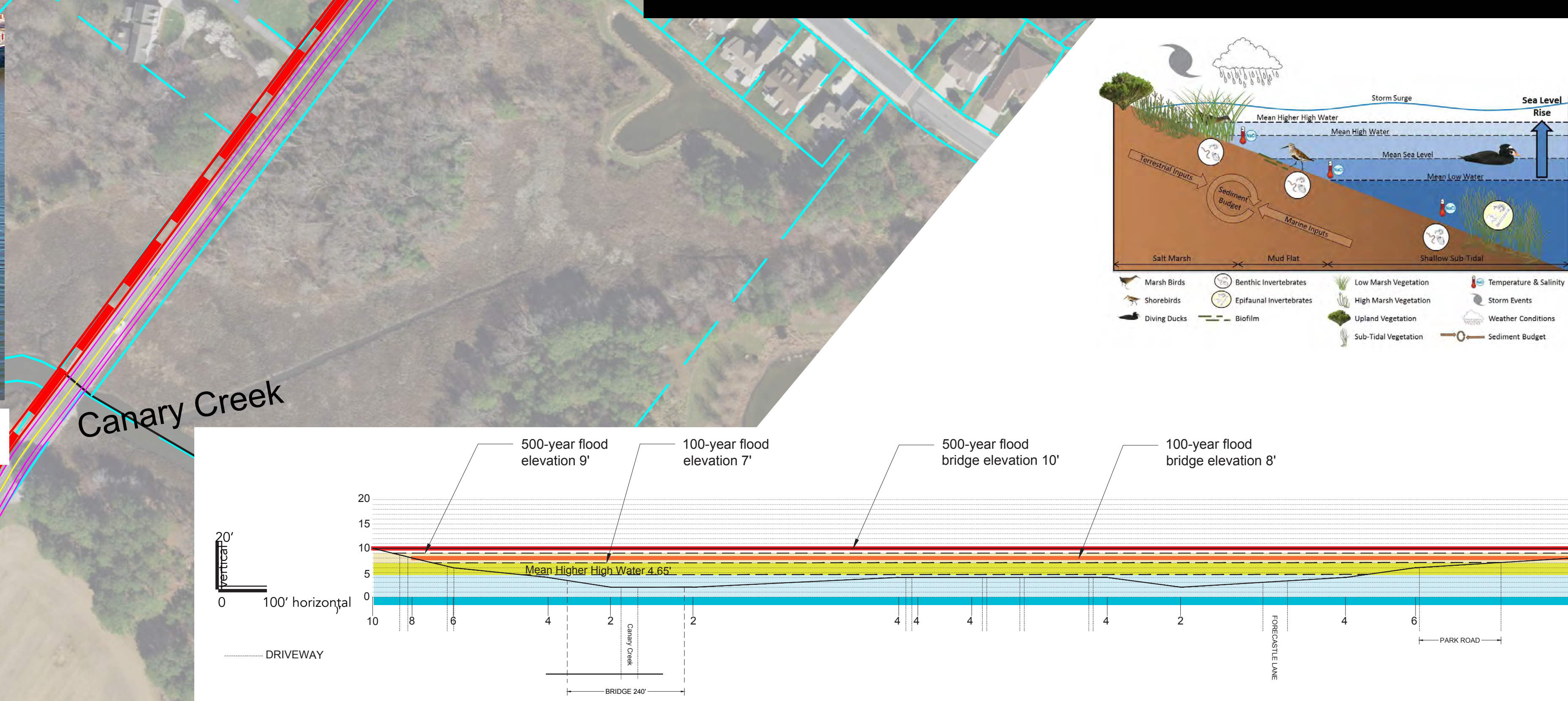


Monmouth County, NJ

## Traffic Calming Concept at Park Road



## Bridge Over Canary Creek and SLR



## Neighborhood Stormwater Ideas



roadside bio-swale



median bio-swale



Infiltration in Parking Strip



neighborhood bio-swale