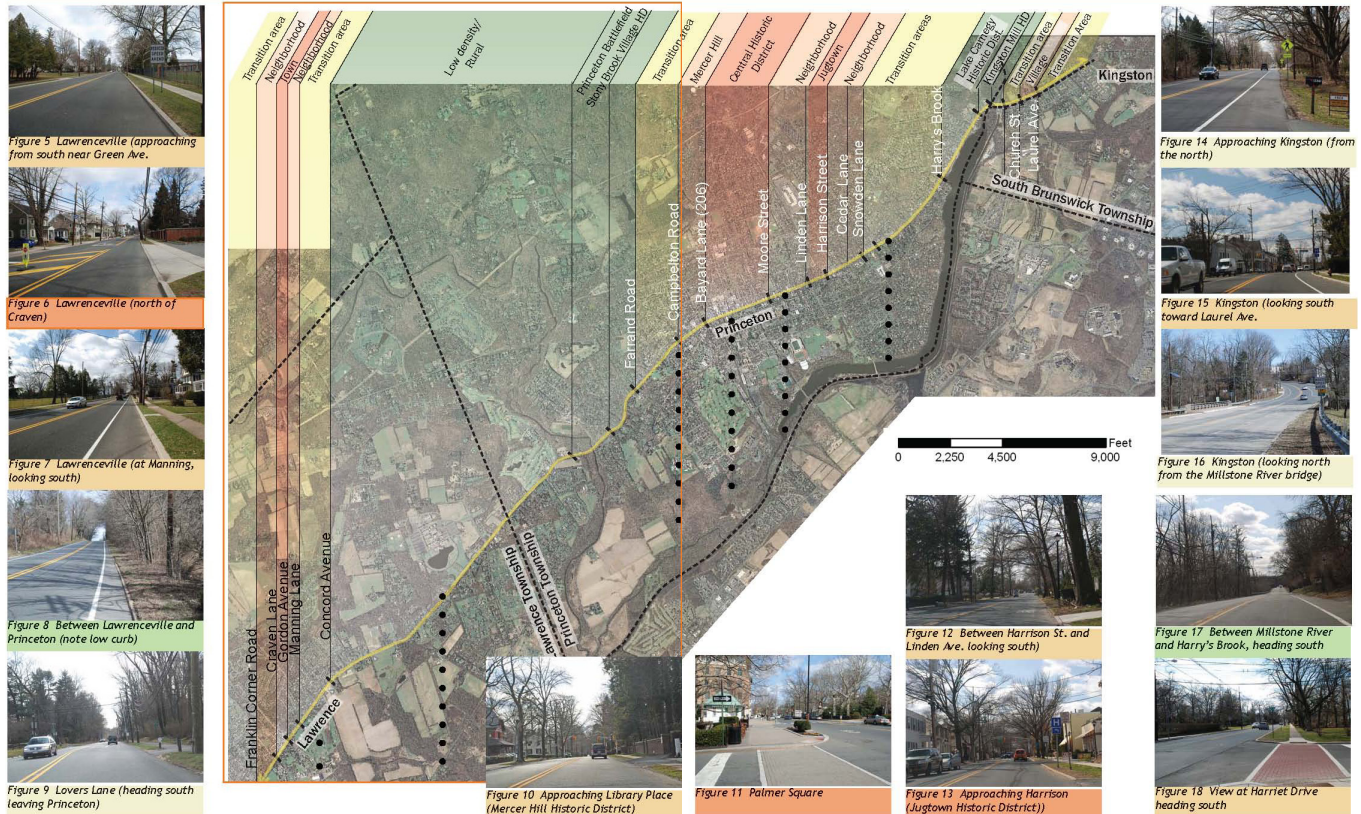


The King's Highway Historic Roadway Guidelines Princeton, New Jersey



Roadway Character Zones



PROJECT: *The Kings Highway Historic Roadway Guidelines*
COMPLETED: 2015

New Jersey's section of The Kings Highway was a segment of the only intercolonial post road and a main stage route long before the turnpike era. The relatively flat band across the narrow waist of New Jersey has always been a logical transportation corridor. In 1834, the road was superseded by the Delaware & Raritan Canal, and shortly afterward by the railroad. In modern times, the New Jersey Turnpike has followed a similar track, albeit several miles to the east. This section of New Jersey has thus been central to transportation in the eastern United States since the country's settlement.

These historic roadway guidelines address transportation projects, highway safety measures and routine maintenance and management of the King's Highway right-of-way in conjunction with localities. When implemented over time, character defining features of the historic roadway and roadside design elements will be preserved or maintained.

Context sensitive solutions are needed to assist NJDOT staff, along with other key stakeholders to both understand the special qualities of The King's Highway and to solve transportation related problems in a manner that will continue to preserve, maintain or enhance the roadway as an important travel route serving localities in Mercer and Somerset counties and the greater Princeton community. The guidelines were developed in collaboration with the Historic Preservation Commission of Princeton, NJ.