

# 8 Bicycle and Pedestrian Facilities

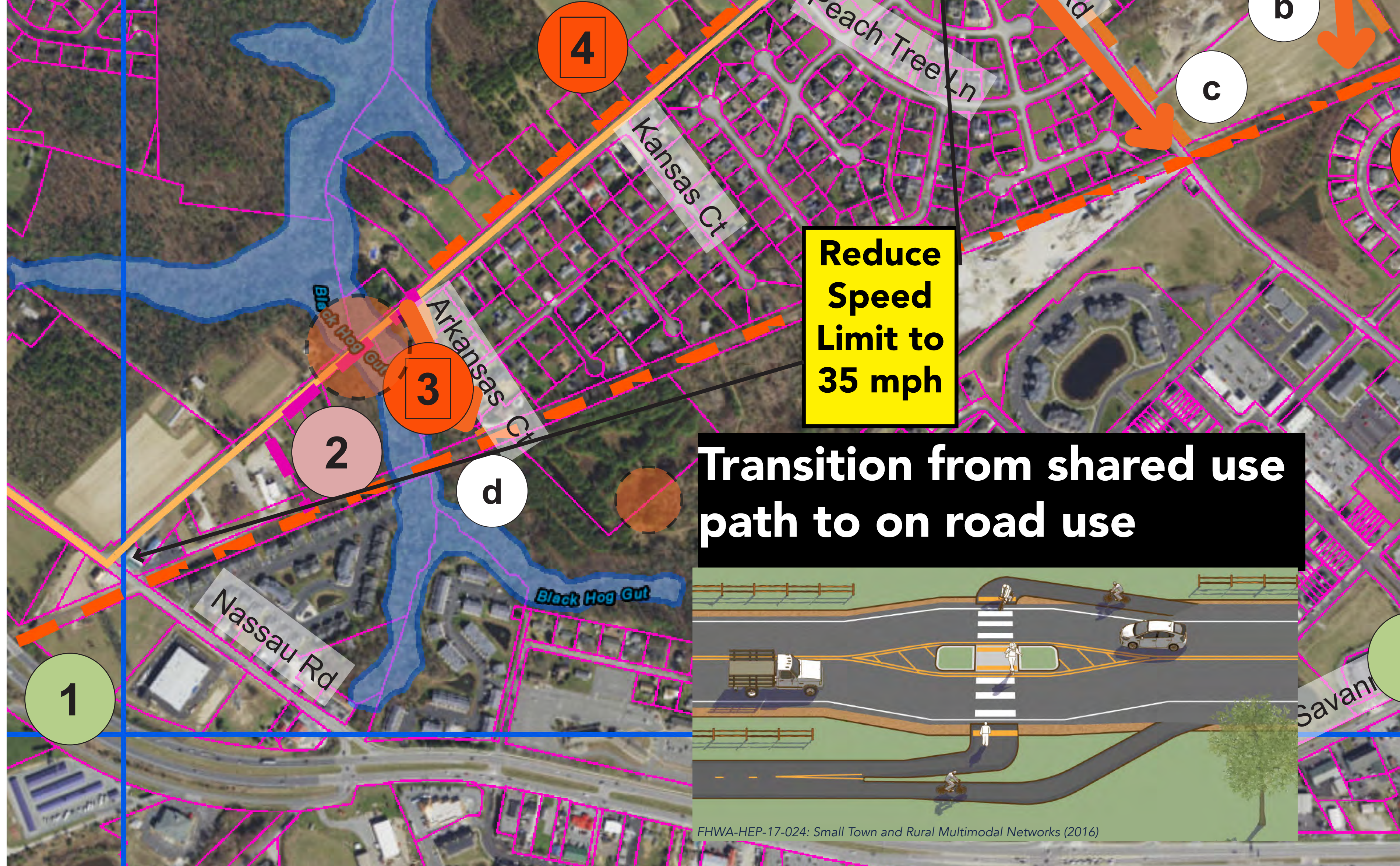
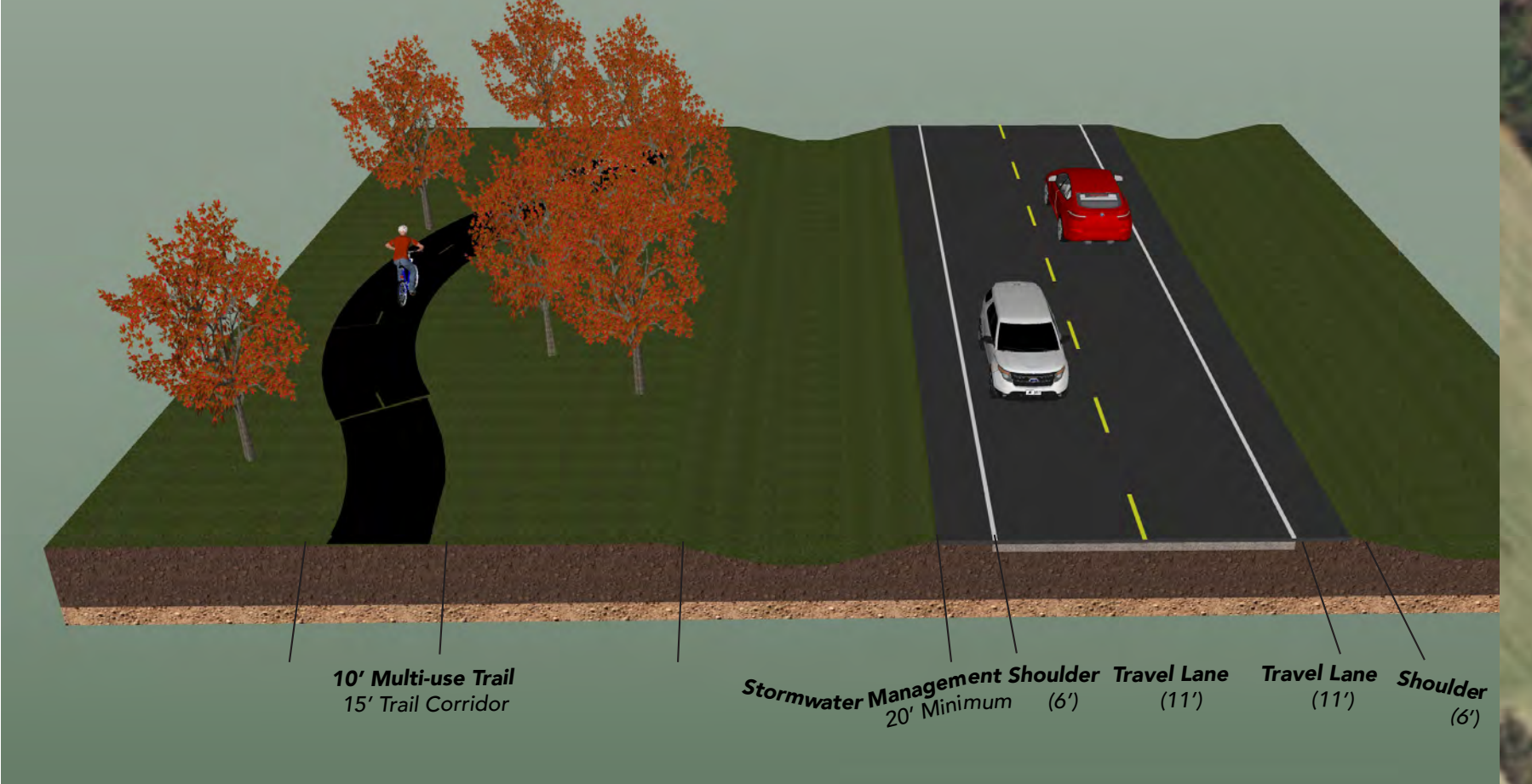
## NEW ROAD CORRIDOR MASTER PLAN

#	Side	DIST	From	To	Impementation
1.	EB	0.0	Minos Conaway Project		Bicycle and Pedestrian connections to rail trail and sidewalk connections to business
2.	EB	.16	Connection to Rail Trail	Black Hog Gut	Developer provided connection to rail trail extending to Black Hog Cut
3.	EB	.07	Black Hog Gut Crossing	Arkansas	Will require bridge over Black Hog Gut on EB side
4.	WB	.52	Arkansas	Old Orchard	Capital improvement (no development pending)
5.	WB	.11	Old Orchard Intersection	Connexion to Groome Church Property (Tower Hill)	Capital Improvement (part of future intersection modifications)
6.	WB	.70	Groome Church Property	Shaffer Lane	Developer provided trail on independent alignment with landscape screening (approved by Sussex County)
7.	EB	.14	Brittingham Farm Property	Canary Creek	Crossing to EB side at Shaffer Lane; Developer provided trail constructed to work with traffic calming (narrow splitter islands)
8.	EB	.00	Canary Creek Bridge		Construct trail on east side of New Road bridge over Canary Creek (as per original CMP) as part of Capital Improvement Project with fishing access, soft landing and small parking area (design TBD)
9.	EB	.38	Canary Creek Bridge	West of Park Road	Part of capital improvement project for bridge – extend trail to crossing west of Park Road
10.	WB	.12	West of Park Road	East of Park Road	Existing trail and crosswalk
11.	TBD	.37	East of Park Road	4 <sup>th</sup> Street	50' right-of-way; to options under consideration (1) bike lanes and sidewalk, or (2) SUP on one side sidewalk on the other
12.	TBD	.15	4 <sup>th</sup> Street	Pilottown Road	40' ROW – same options as above but (1) bike lanes and 1 sidewalk; or (2) sidepath only on one side of the road

- POTENTIAL RAIL-TRAIL CONNECTIONS**
- Brittingham Farm and properties along Canary Creek Floodplain
  - Black Hog Farmstead and properties along tributary of Black Hog Gut
  - Coordinated with Old Orchard Road land use and transportation projects
  - Arkansas Court (easement required at end of cul-de-sac)
- TRANSITION REQUIRED BETWEEN DEVELOPER PROVIDED SHARED USE TRAIL AND PHASED FUTURE TRAIL**

- Legend**
- roadway feature
  - road centerline
  - trail
  - parcel
  - vegetation
- Flood Map**
- Base Flood Elevation
  - Transect
  - Cross Sections
  - LiMWA (Limit of Moderate Wave Action)
  - Firm panel
- FEMA Flood Maps**
- Flood Zone**
- A
  - AE (100-yr flood)
  - AE, Floodway
  - AO
  - VE
  - X, 0.2 PCT Annual chance flood hazard (500-yr flood)

### Typical Shared Use Path



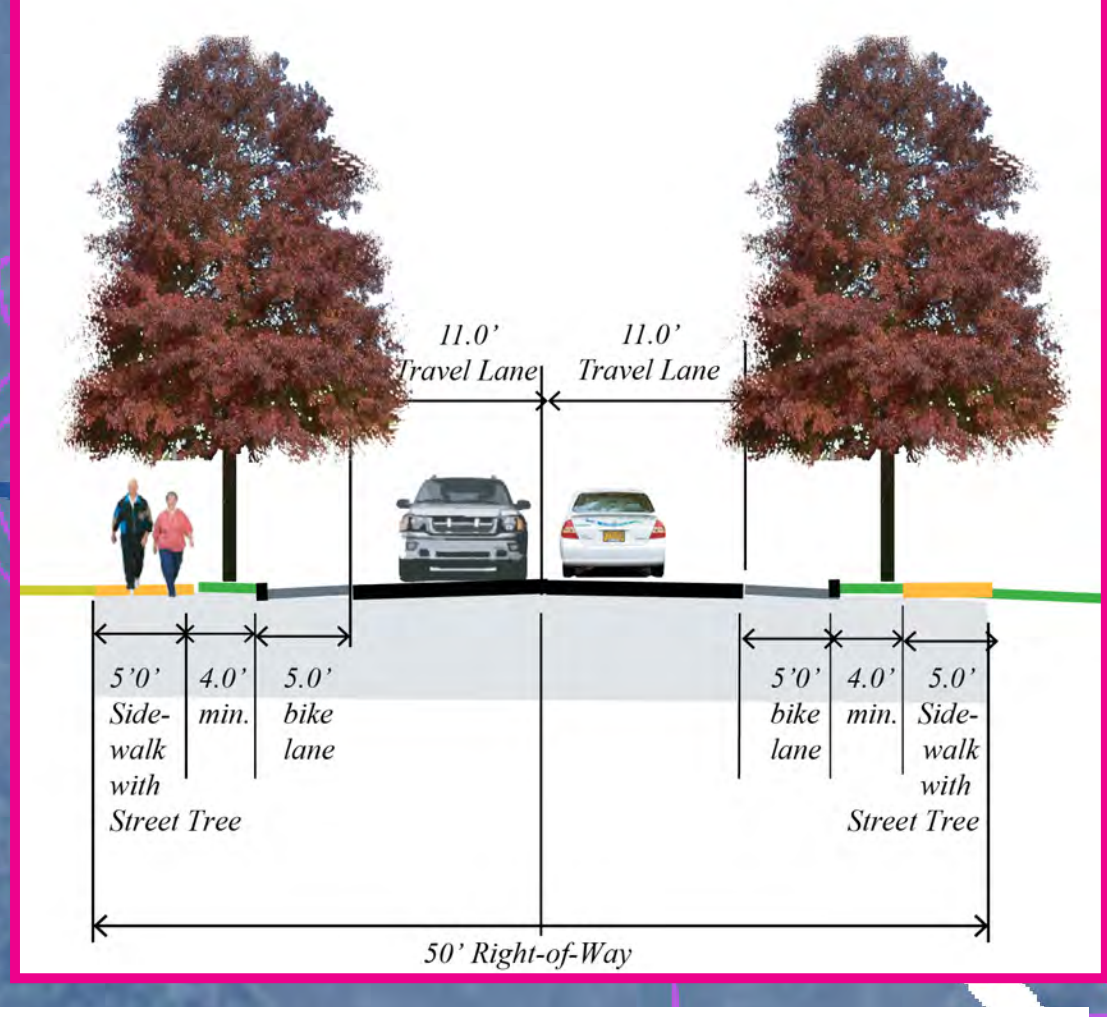
### Park to 4th



**11**

**ISSUES/recommendations:**  
**RIGHT-OF-WAY LIMITATIONS/ADJACENT USES**  
**FLOODING; HIGH VEHICLE OPERATING SPEEDS**

- coordinate stormwater management, flood mitigation, traffic calming and pedestrian/bicycle safety
- compare options: (1) bike lanes /sidewalk both on both sides or (2) multi-usepath on one side/sidewalk on one side



(1)Bike Lanes and Sidewalks

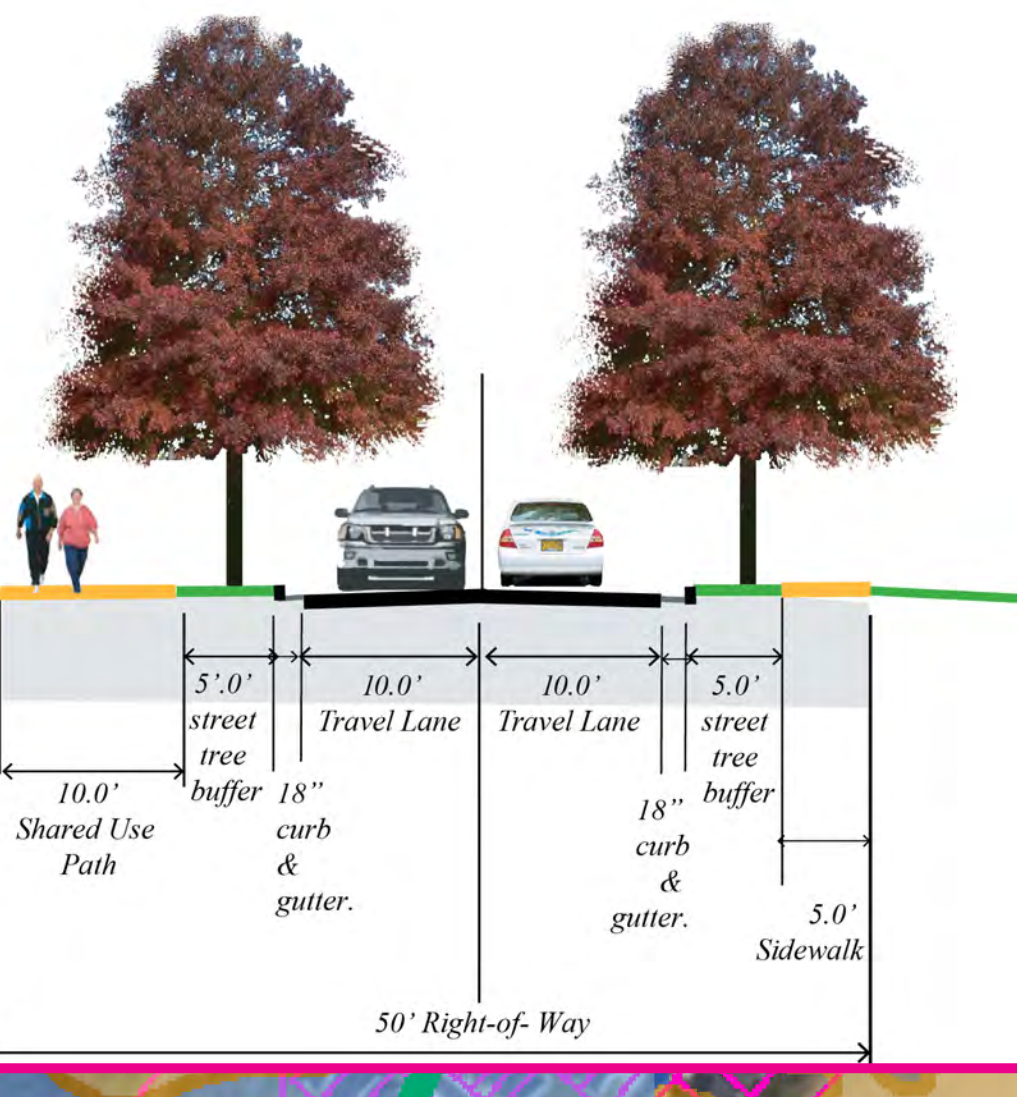
### 4th to Pilottown



**12**

**ISSUES/recommendations:**  
**RIGHT-OF-WAY LIMITATIONS/ADJACENT USES**

- bike lanes both ways and sidewalk on one side or no bike lanes and shared use path on one side



(2)Sidepath & sidewalk

### Brittingham Farm



**7**

**ISSUES/recommendations:**  
**RIGHT-OF-WAY LIMITATIONS/ADJACENT USES**

- bike lanes both ways and sidewalk on one side or no bike lanes and shared use path on one side

### Canary Creek



**8**

**ISSUES/recommendations:**  
**SEA-LEVEL RISE ASSUMPTIONS; CREEK ACCESS**

- shared-use path 1) part of bridge or 2) as separate alignment w/parking, fishing and hand carry water access
- roadway elevation above future 100-year floodplain if evacuation route is desired

### @ Old Orchard

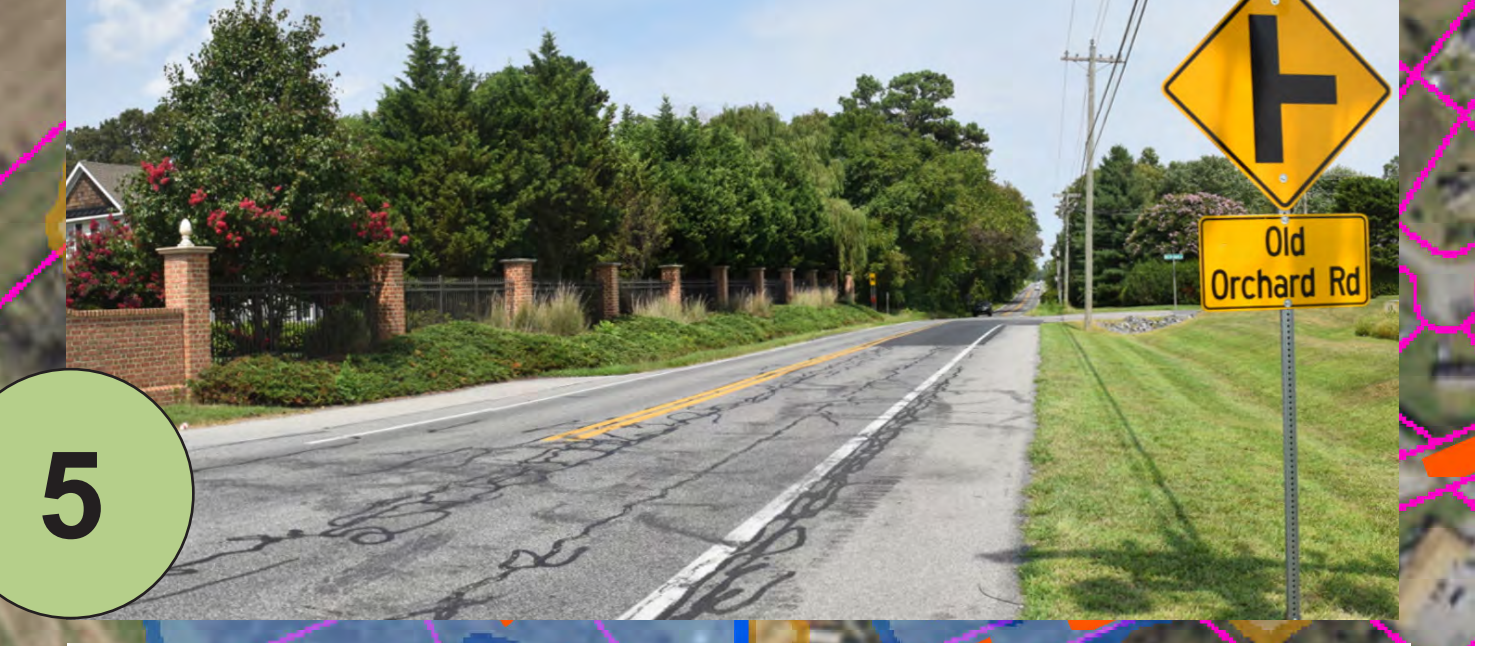


**5**

**ISSUES/recommendations:**  
**RIGHT-OF-WAY LIMITATIONS/ADJACENT RESIDENCES**

- shift intersection to SW and reconstruct ponds (sheet 5)
- make connection to Groome Church Property trail segment

### Black Hog Gut Crossing Arkansas - Old Orchard



**4**

**ISSUES/recommendations:**  
**LONG-TERM (COORDINATE W/ FUTURE ROAD PROJECT)**

- temporary transition from multi-use trail to on-road facility
- use independent alignment to save trees

### Gateway Nassau Road/New Road Intersection

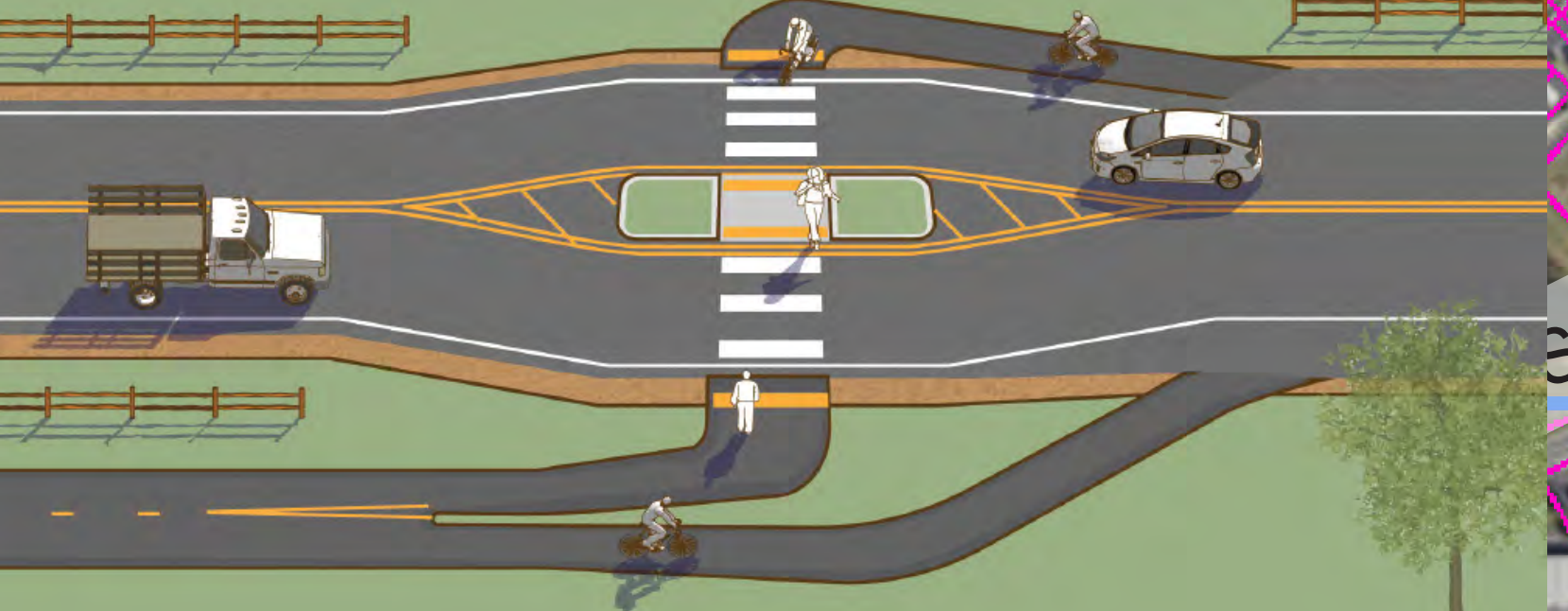


**3**

**ISSUES/recommendations:**  
**LIMITED RIGHT-OF-WAY AND TREE PRESERVATION**

- consider independent timber structure on piles to preserve trees

### Transition from shared use path to on road use



### Black Hog Gut Crossing Arkansas - Old Orchard



**2**

**ISSUES/recommendations:**  
**COORDINATION WITH MINOS CONAWAY PROJECT (see Board #4)**

- pedestrian and bicycle access through intersection and from rail-trail
- shift location of proposed roundabout to the west to increase pedestrian and bicycle access

**COORDINATION WITH PROPOSED BLACK HOG VILLAGE DEVELOPMENT**

- link to rail-trail through proposed development (location TBD)
- extend Multi-use Trail to Black Hog Gut