

# 6 Old Orchard to Canary Creek NEW ROAD CORRIDOR MASTER PLAN



## Assets:

- Open Spaces with Farmland, Roadside Trees, Canary Creek riparian corridor, residences with deep setbacks

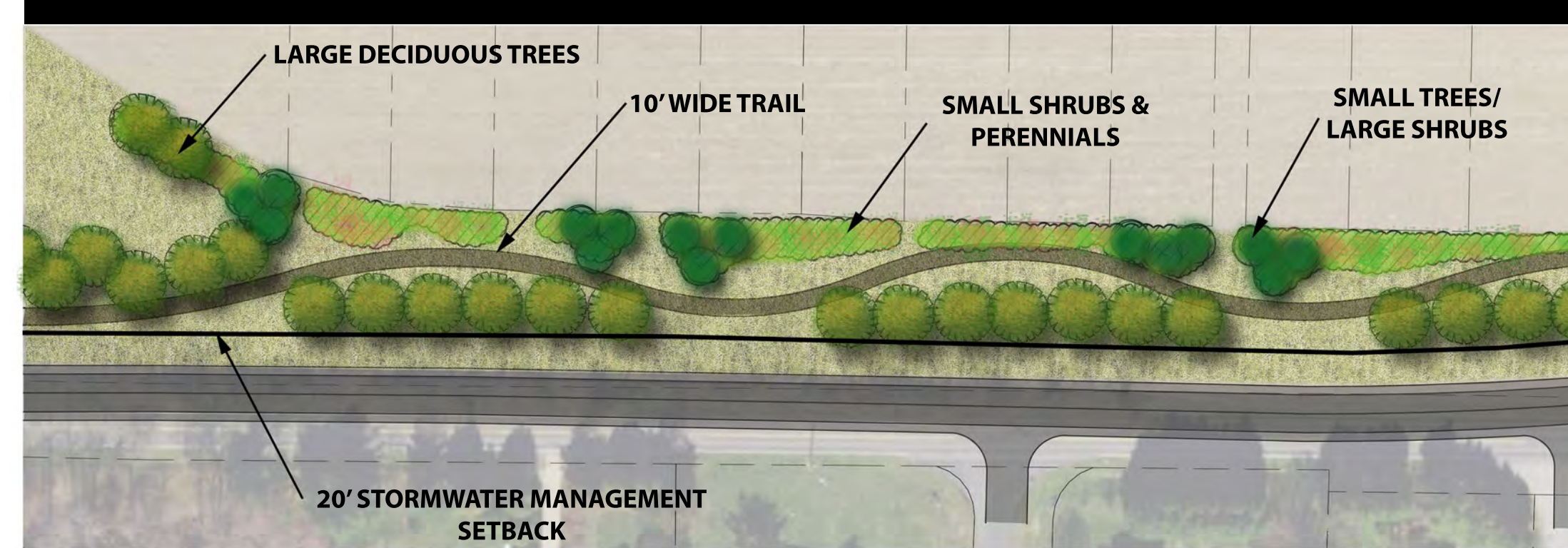
## Changes & Proposals:

- Development changes for Groome Church property and Brittingham Property
- Elevation/Resiliency of Canary Creek Bridge and approaches

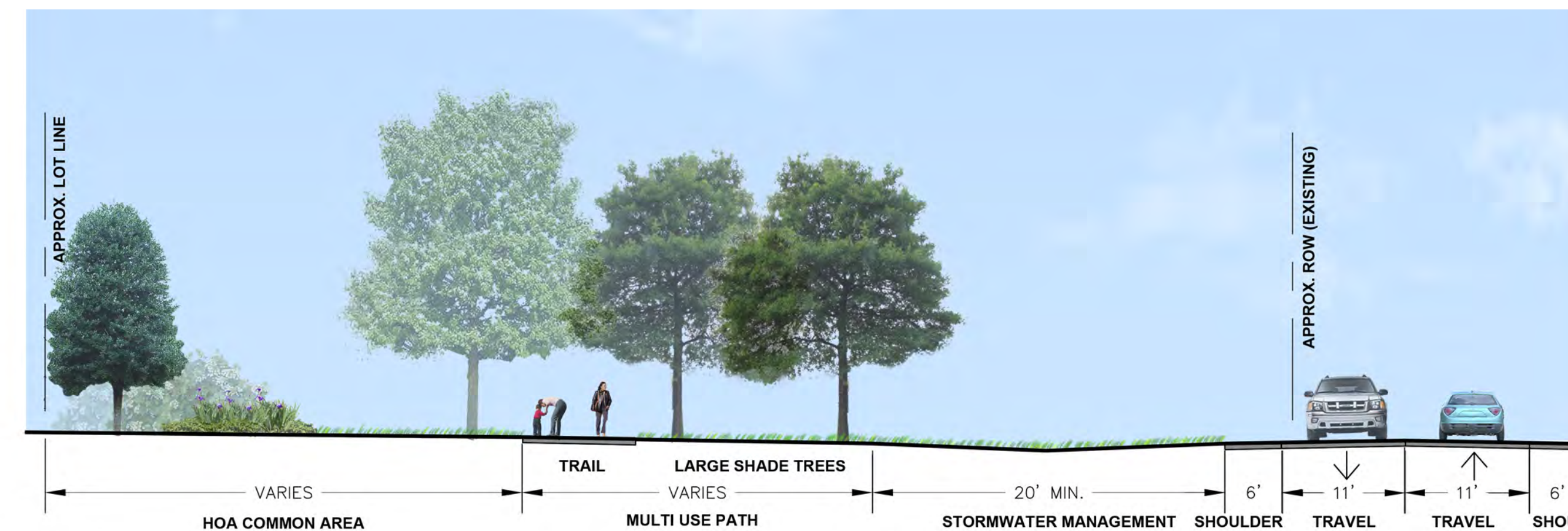
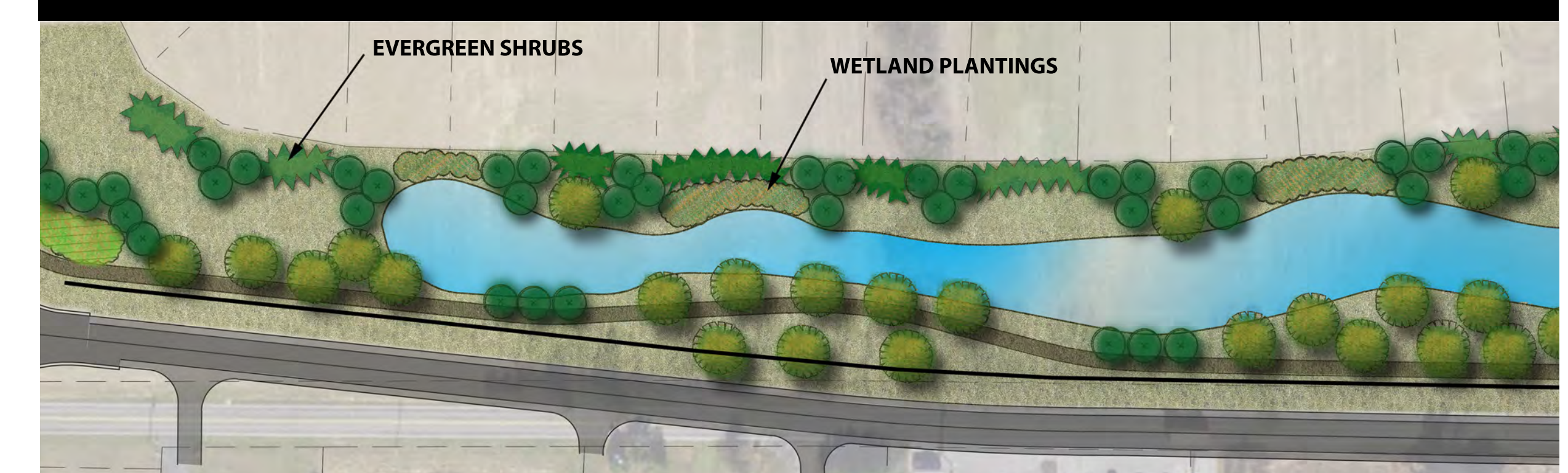
## Opportunities:

- Accommodating shared use trail with links to larger network
- Addressing stormwater management and poor drainage
- Preserving roadside and riparian trees
- Respecting future floodplain management needs

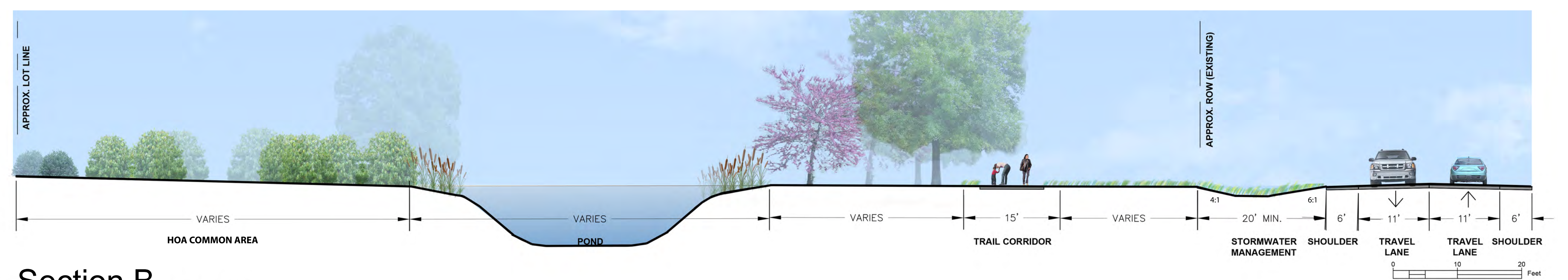
### Concept for Landscape Screening with a Meandering Trail



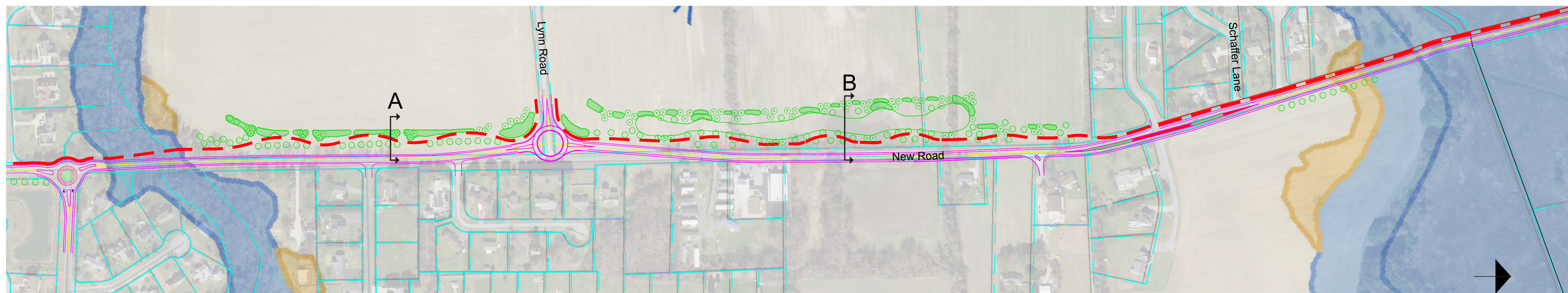
### Concept for Landscape Screening with Stormwater Management



Section A



Section B



## Landscape Screening Ideas



Street trees, Brandywine Valley Scenic Byway



Natural Area (Enhancing Delaware's Highways)



Earthen berm and retaining wall (Journey Through Hallowed Ground National Scenic Byway)



Roadside Hedgerow (Enhancing Delaware's Highways)

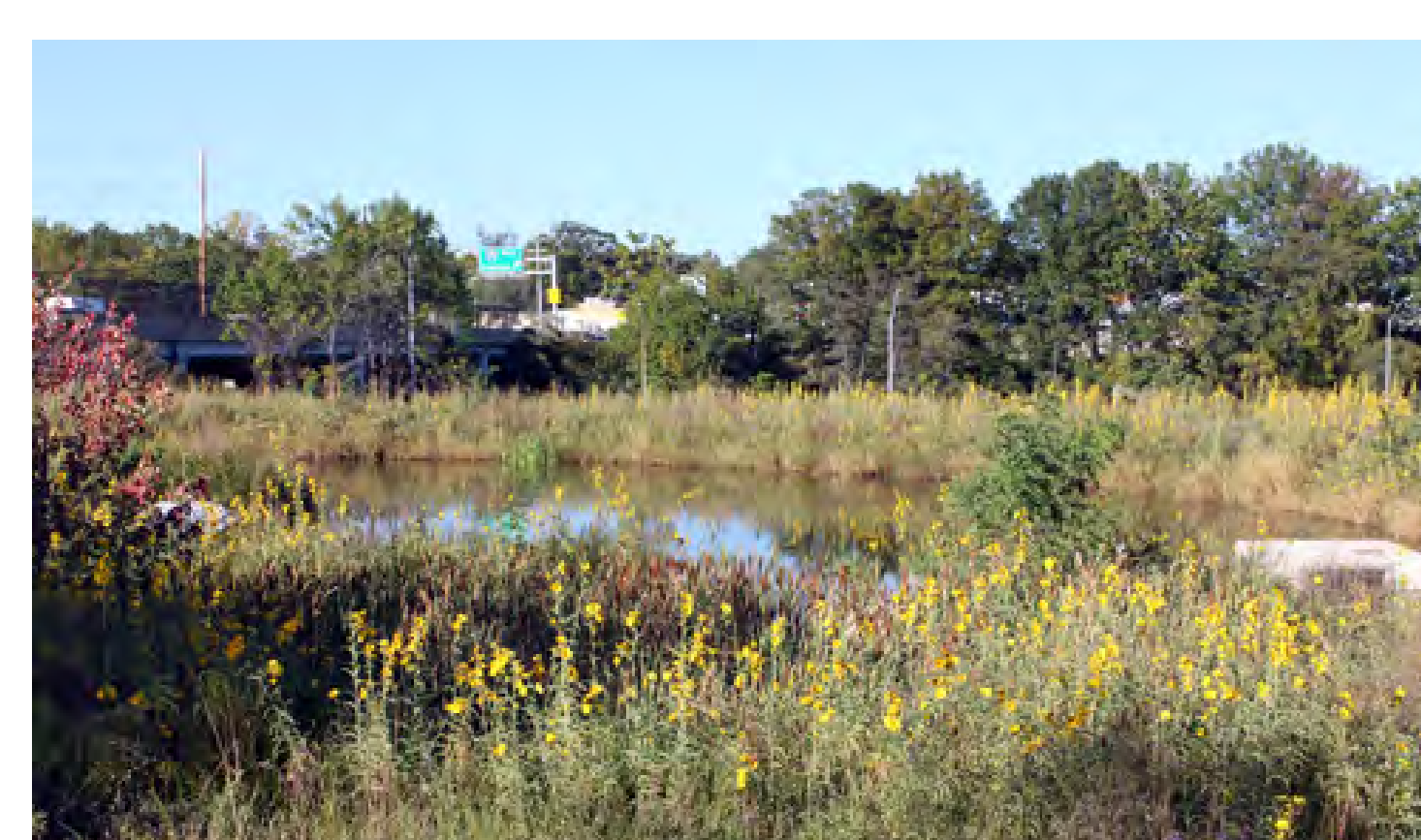
## Stormwater Management (Ideas for Ponds and Swales)



Bio-swale (U. of Delaware)



Pond (US 50, Queen Anne Co., MD)



Bio-swale (MD 147 at I-695)



Pond (Currituck County, NC)