

Update to Transportation, Pedestrian Networks & Streetscaping Elements

Agenda

- 7:00 Introductions
Process, Questionnaire Snapshot
- 7:15 Discussion – three topics
 1. Traffic Calming
 2. Streets and Sidewalks
 3. Public Spaces
- 8:15 General Q&A and Next Steps
- 8:30 Adjourn



Town of Brookeville Comprehensive Plan

Update to Transportation, Pedestrian Networks & Streetscaping Elements



California Route 66



Journey Through Hallowed Ground, VA, MD, PA



Historic National Road, MD



Illinois River Road



Walton Road, TN



Millstone Valley, NJ



New River Gorge, WV



Brandywine Valley, DE



Washington Heritage, WV



Newfound Gap, Great Smoky Mountains NP



Mt. St. Helens Region, WA



Palisades Parkway, NY



Route 169, Northeastern CT



Monongahela Byway, WV



Maryland Scenic Byways Strategic Plan



Utah Scenic Byways Program



Connecticut Scenic Roads Study



Southern Maryland Heritage



Chesapeake Country Mid-Shore



Update to Transportation, Pedestrian Networks & Streetscaping Elements

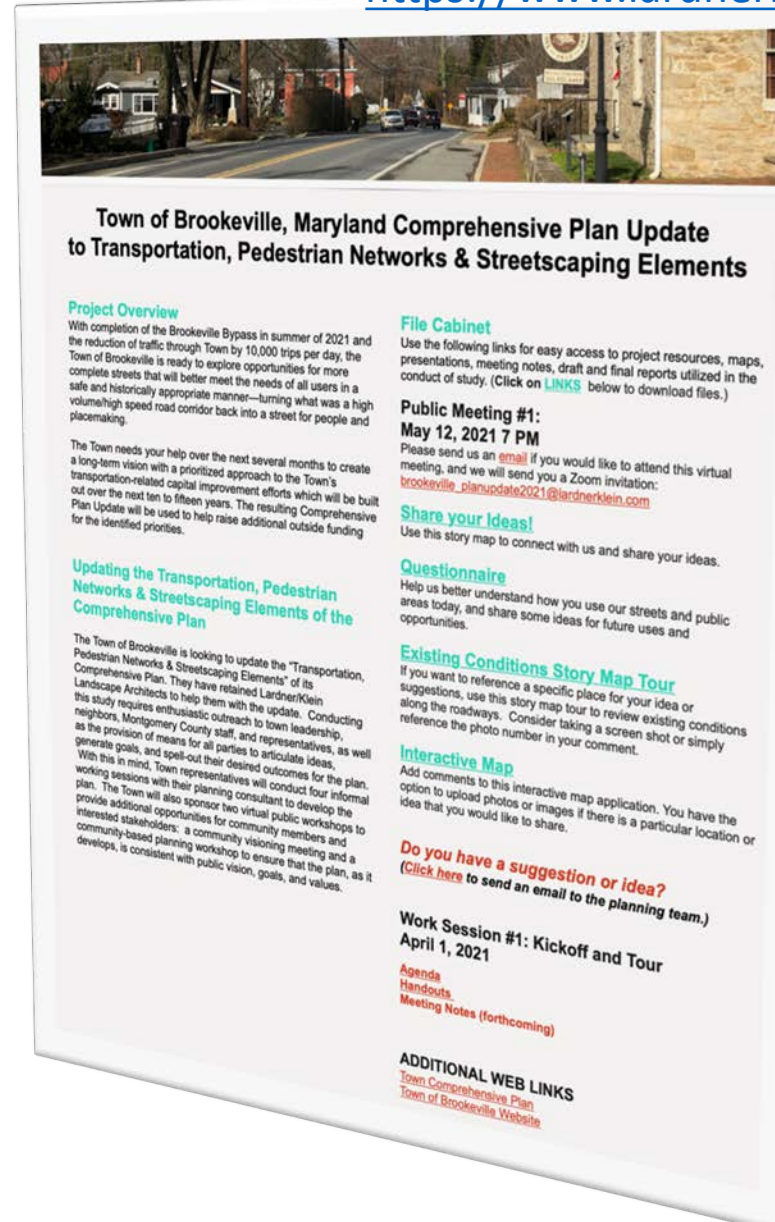
Route 50 Traffic Calming: Upperville/Middleburg/Aldie (2001-2016)



<https://www.lardnerklein.com/brookevillemdplanupdate>

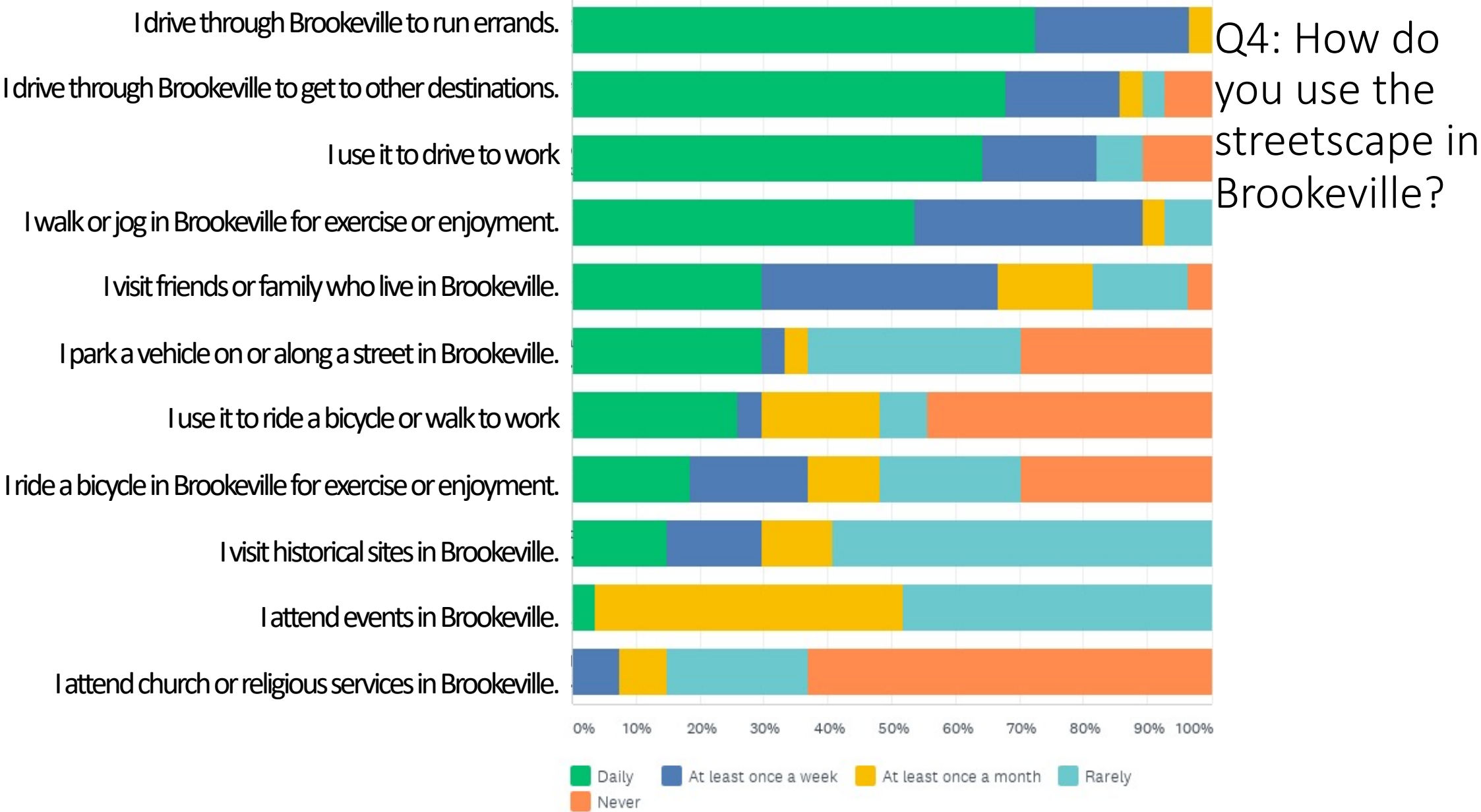
Five Ways to Get Involved

- [QUESTIONNAIRE](#)
- [MAP YOUR IDEAS](#)
- [TAKE A MAP TOUR](#)
- [SHARE YOUR THOUGHTS](#)
- **ATTEND THE VIRTUAL COMMUNITY MEETING**



Town of Brookeville Comprehensive Plan

Update to Transportation, Pedestrian Networks & Streetscaping Elements

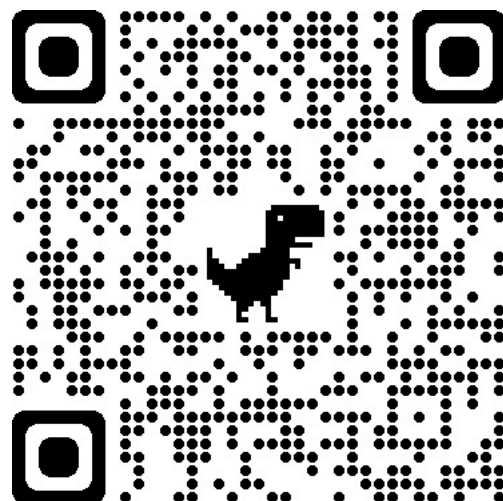


Update to Transportation, Pedestrian Networks & Streetscaping Elements

SURVEY OPEN UNTIL MAY 19!

Q6 What is the biggest challenge facing the town in preserving the features important to you?

historical money historic Funding roads sidewalks **Brookeville**
make **town** safety **needs** look preserving traffic maintain
Improving



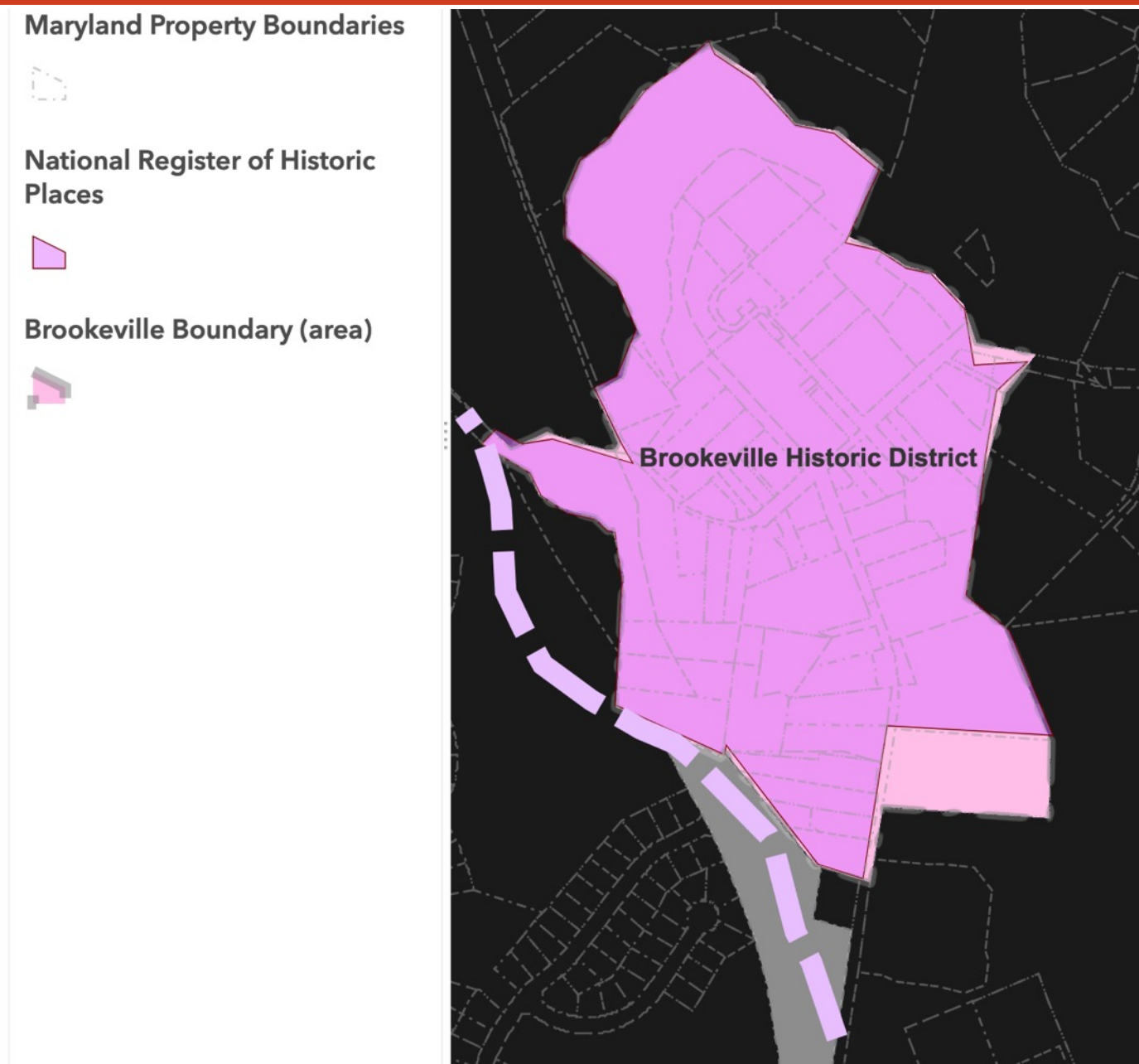
<https://www.lardnerklein.com/brookevillemdplanupdate>

Update to Transportation, Pedestrian Networks & Streetscaping Elements

<i>Anticipated Schedule</i>	2021
<i>BRAINSTORMING</i> <ul style="list-style-type: none"><i>Kickoff Tour with Planning Commission/Commissioners</i><i>Preliminary Vision and Goals</i>	April
<i>COMMUNITY VISIONING</i> <ul style="list-style-type: none"><i>Public Visioning Session (Virtual)</i>	May
<i>GOALS AND STRATEGIES</i> <ul style="list-style-type: none"><i>Develop ideas into specific goals and strategies (preliminary plan)</i><i>Community Planning Workshop(Virtual)</i>	June
<i>DEVELOP PLAN</i> <ul style="list-style-type: none"><i>Draft Plan and Implementation Priorities</i><i>Review and Revise Plan</i>	July



Update to Transportation, Pedestrian Networks & Streetscaping Elements

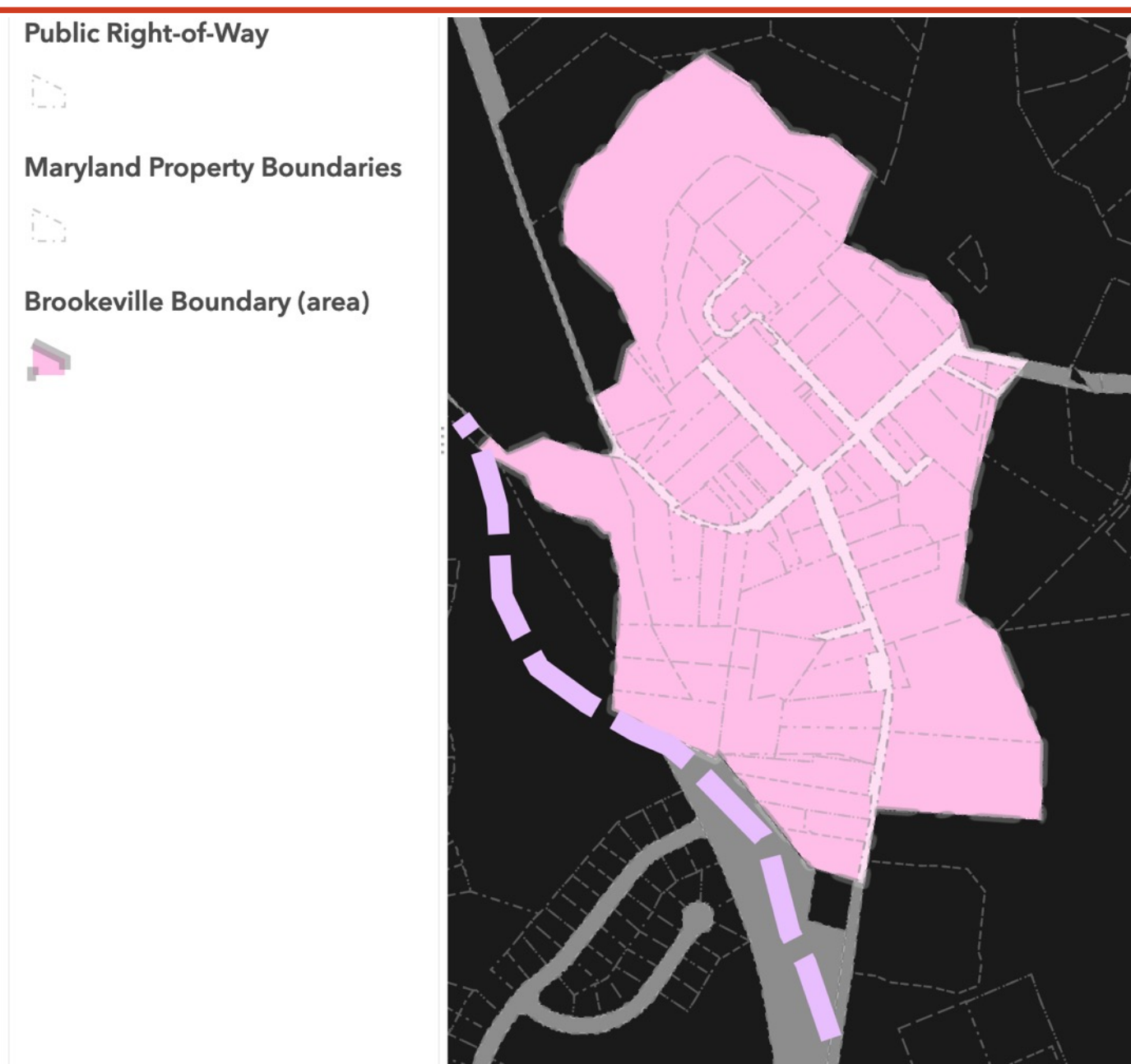


Richard Thomas House, c 19th century



Howard House, undated

Update to Transportation, Pedestrian Networks & Streetscaping Elements



Town of Brookeville Comprehensive Plan

Update to Transportation, Pedestrian Networks & Streetscaping Elements

Public Right-of-Way



Maryland Property Boundaries



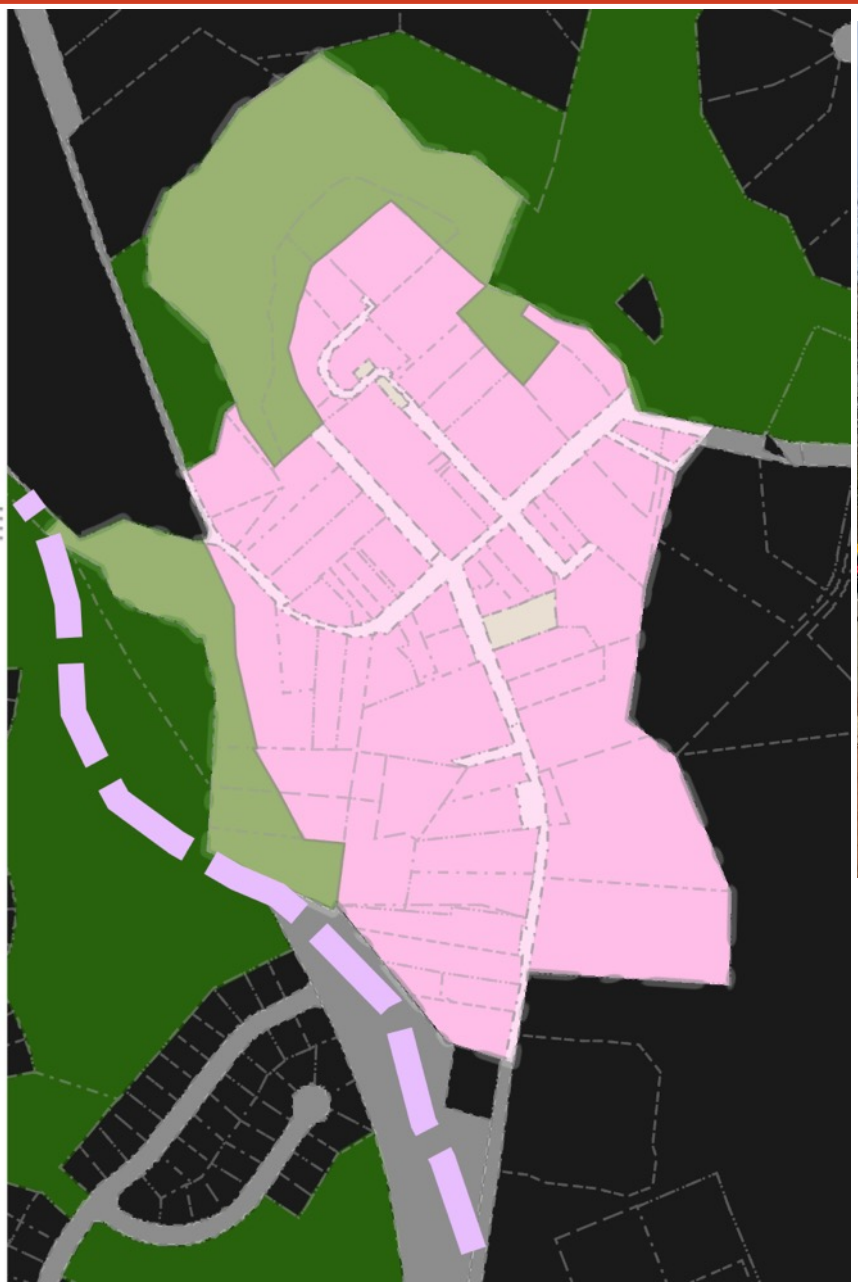
Parkland

- M-NCPPC
- Municipal
- State of Maryland
- WSSC
- Revenue Authority
- United States

Town of Brookeville Ownership



Brookeville Boundary (area)



Town of Brookeville Comprehensive Plan

Update to Transportation, Pedestrian Networks & Streetscaping Elements

Public Right-of-Way



Maryland Property Boundaries



Parkland

- M-NCPPC
- Municipal
- State of Maryland
- WSSC
- Revenue Authority
- United States

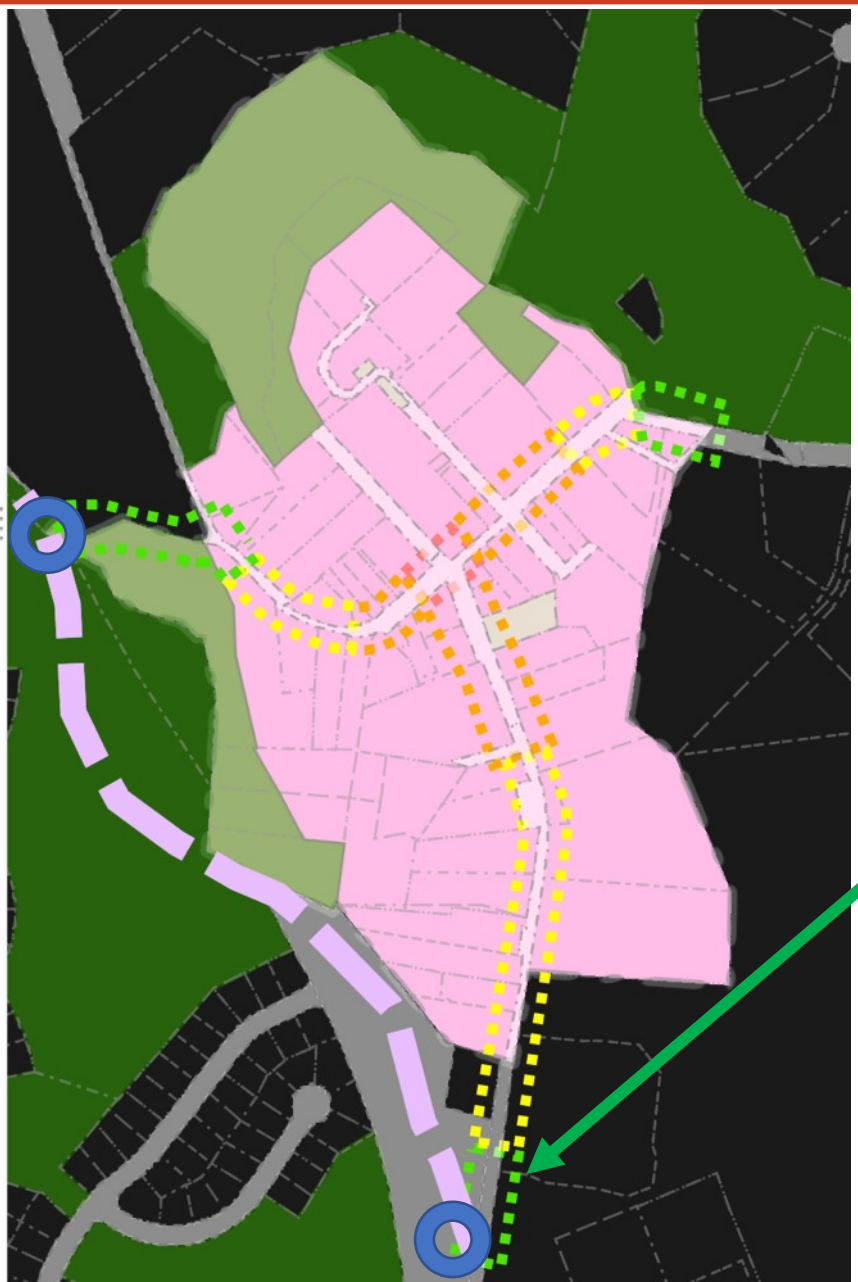
Town of Brookeville Ownership



Brookeville Boundary (area)



High Street North Bound



- GATEWAY
- TRANSITION
- IN TOWN
- INTERSECTION

Town of Brookeville Comprehensive Plan

Update to Transportation, Pedestrian Networks & Streetscaping Elements

Public Right-of-Way



Maryland Property Boundaries



Parkland

- M-NCPPC
- Municipal
- State of Maryland
- WSSC
- Revenue Authority
- United States

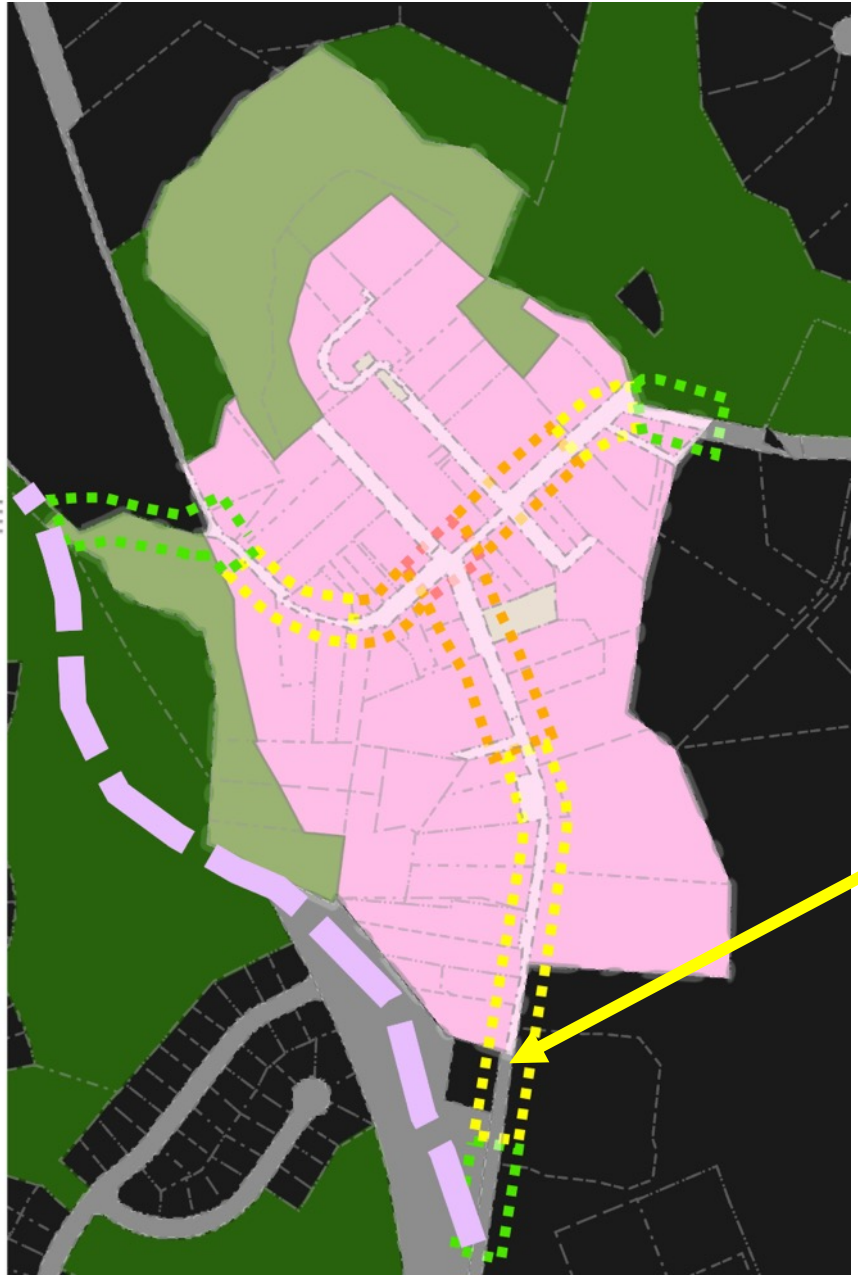
Town of Brookeville Ownership



Brookeville Boundary (area)



High Street North Bound



Town of Brookeville Comprehensive Plan

Update to Transportation, Pedestrian Networks & Streetscaping Elements

Public Right-of-Way



Maryland Property Boundaries



Parkland

- M-NCPPC
- Municipal
- State of Maryland
- WSSC
- Revenue Authority
- United States

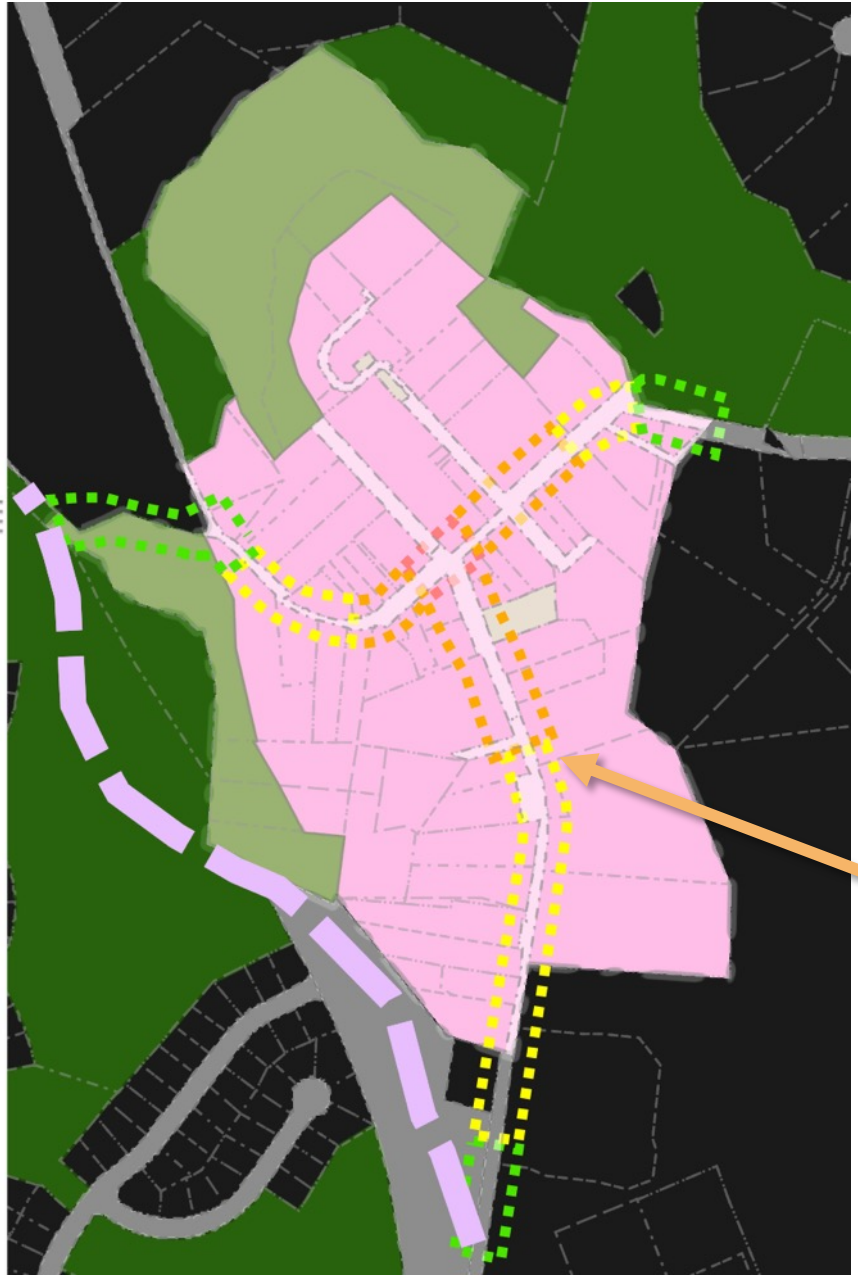
Town of Brookeville Ownership



Brookeville Boundary (area)



High Street North Bound



Town of Brookeville Comprehensive Plan

Update to Transportation, Pedestrian Networks & Streetscaping Elements

Public Right-of-Way



Maryland Property Boundaries



Parkland

- M-NCPPC
- Municipal
- State of Maryland
- WSSC
- Revenue Authority
- United States

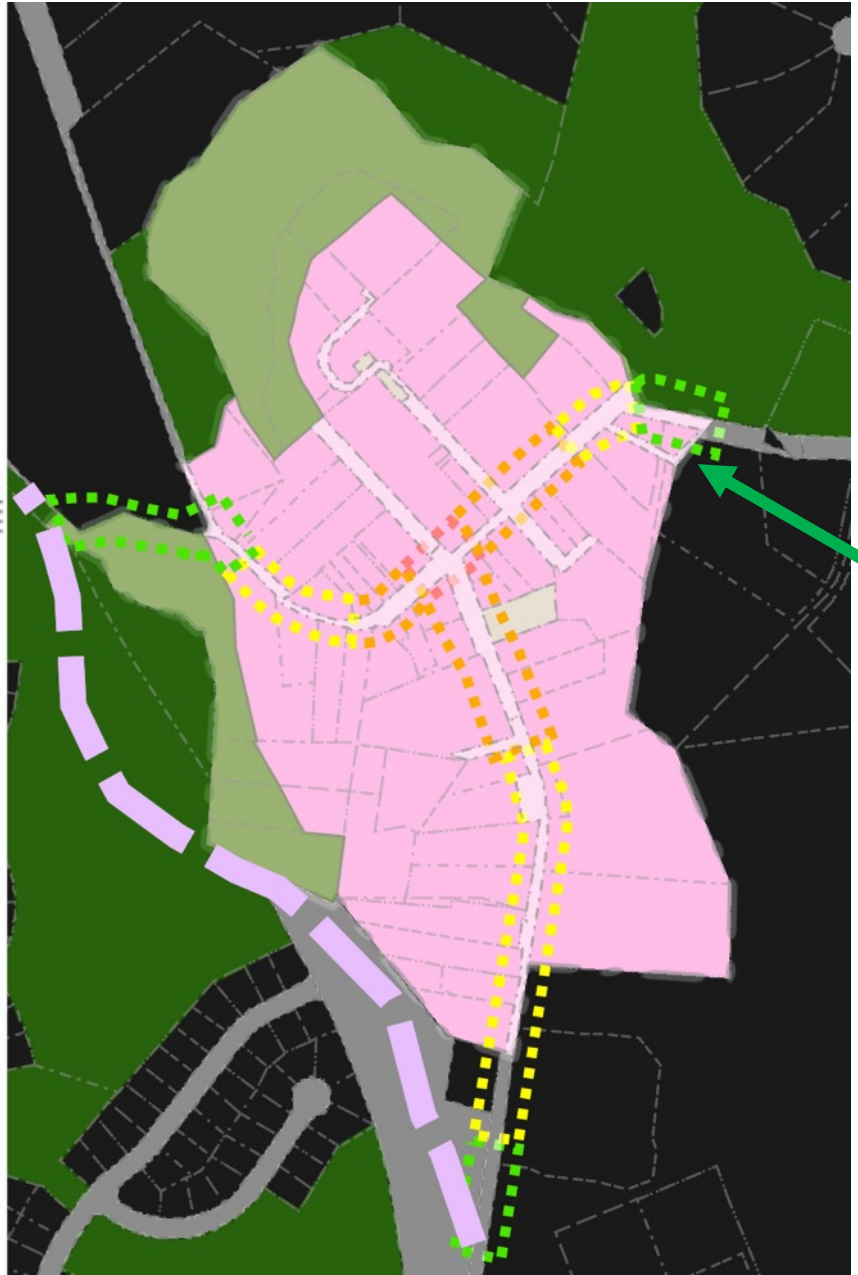
Town of Brookeville Ownership



Brookeville Boundary (area)



Market Street West Bound



- GATEWAY
- TRANSITION
- IN TOWN
- INTERSECTION

Town of Brookeville Comprehensive Plan

Update to Transportation, Pedestrian Networks & Streetscaping Elements

Public Right-of-Way

Maryland Property Boundaries

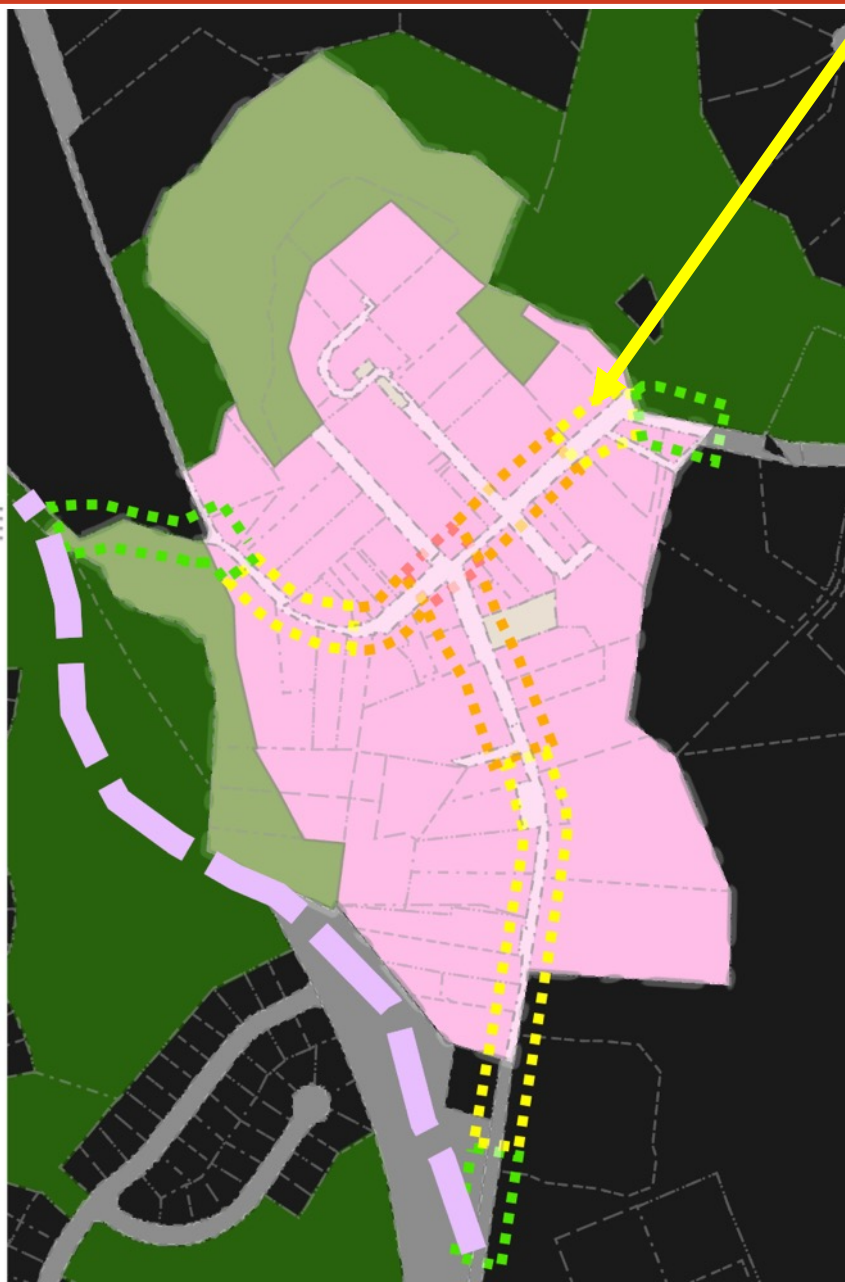
Parkland

- M-NCPPC
- Municipal
- State of Maryland
- WSSC
- Revenue Authority
- United States

Town of Brookeville Ownership

Brookeville Boundary (area)

Market Street West Bound



Town of Brookeville Comprehensive Plan

Update to Transportation, Pedestrian Networks & Streetscaping Elements

Public Right-of-Way



Maryland Property Boundaries



Parkland

- M-NCPPC
- Municipal
- State of Maryland
- WSSC
- Revenue Authority
- United States

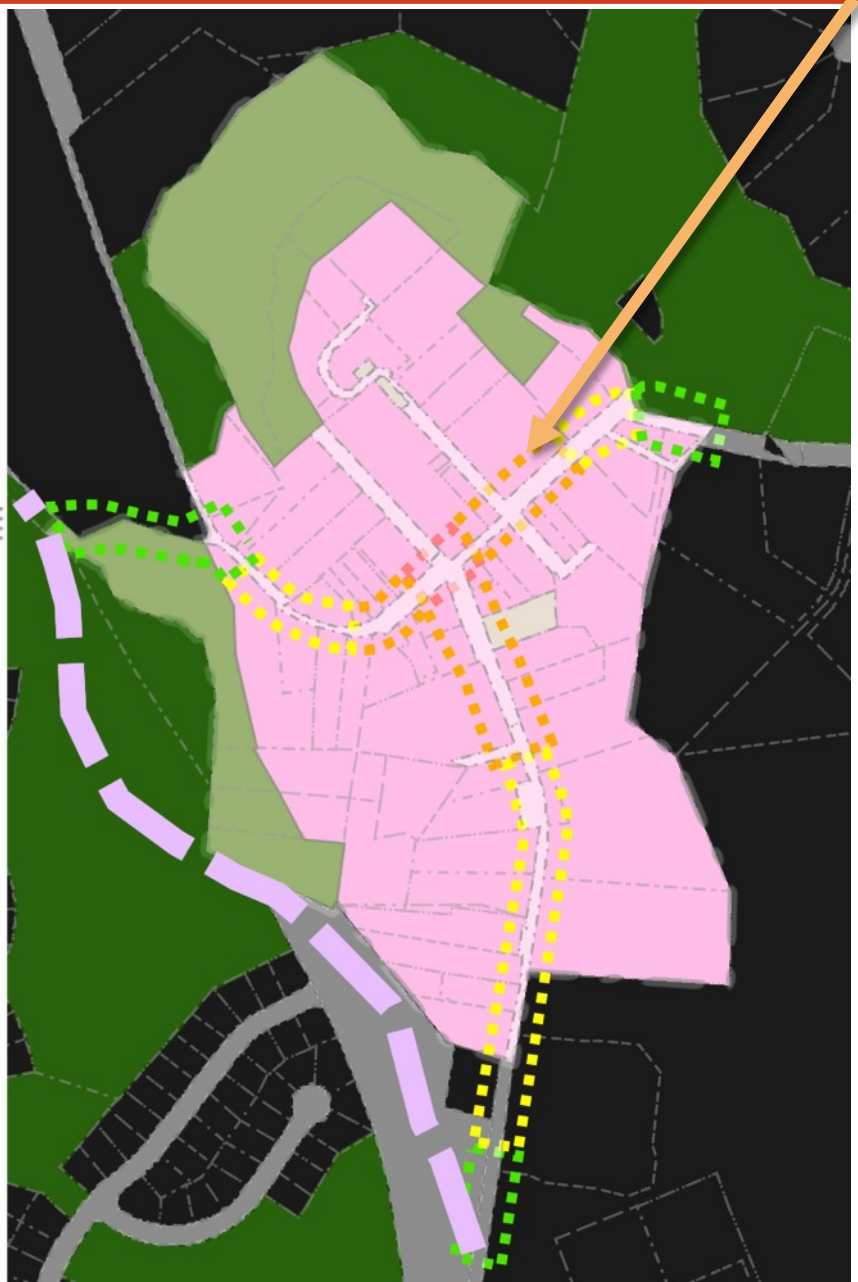
Town of Brookeville Ownership



Brookeville Boundary (area)



Market Street West Bound



Town of Brookeville Comprehensive Plan

Update to Transportation, Pedestrian Networks & Streetscaping Elements

Public Right-of-Way



Maryland Property Boundaries



Parkland

- M-NCPPC
- Municipal
- State of Maryland
- WSSC
- Revenue Authority
- United States

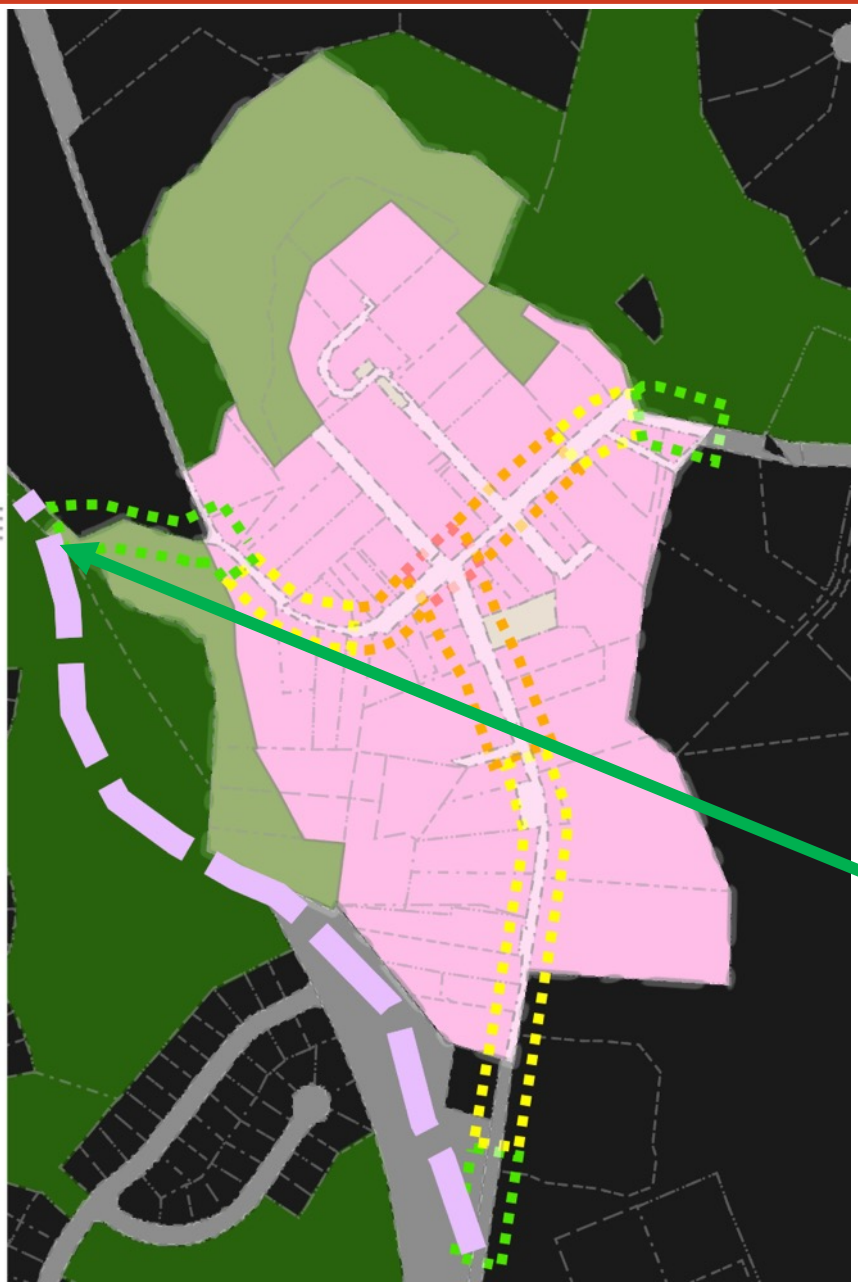
Town of Brookeville Ownership



Brookeville Boundary (area)



Brookeville Rd. East Bound



Town of Brookeville Comprehensive Plan

Update to Transportation, Pedestrian Networks & Streetscaping Elements

Public Right-of-Way



Maryland Property Boundaries



Parkland

- M-NCPPC
- Municipal
- State of Maryland
- WSSC
- Revenue Authority
- United States

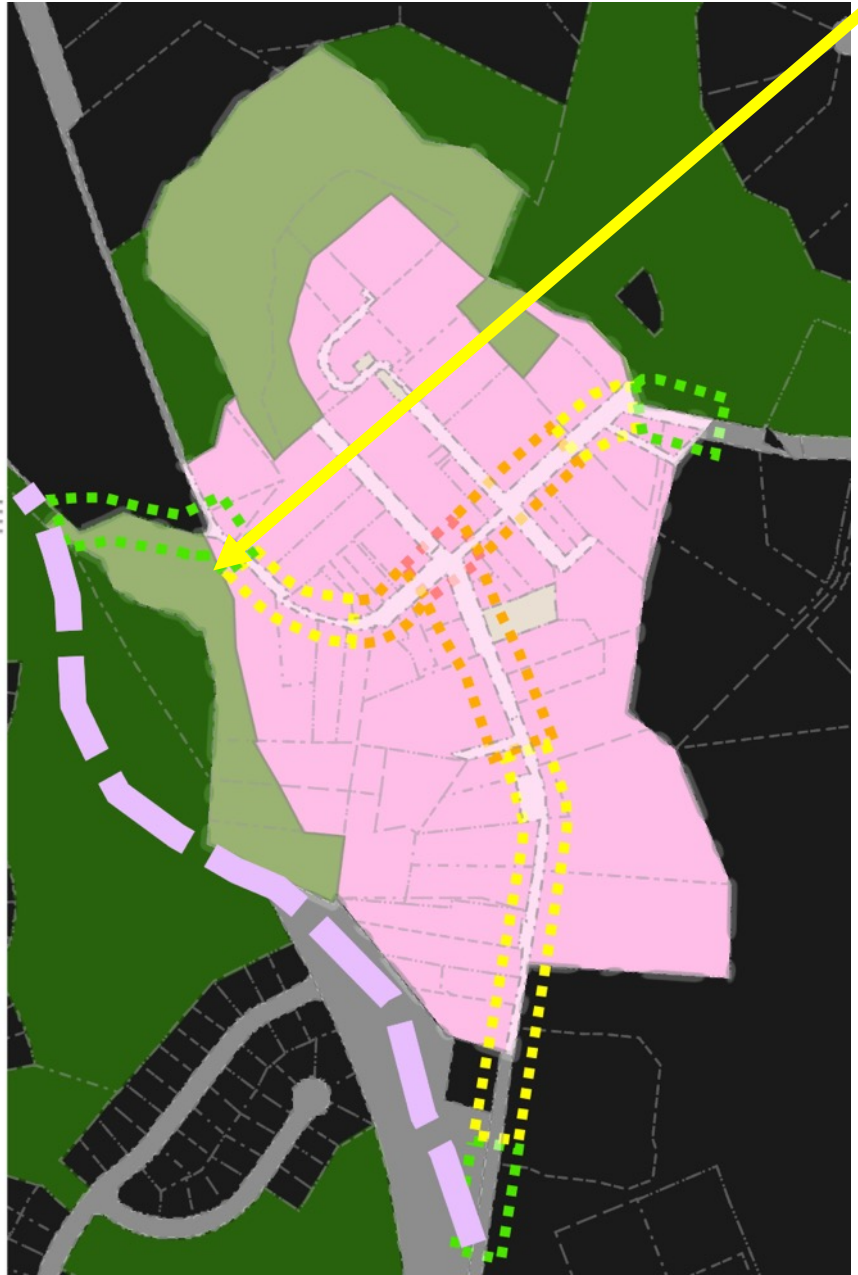
Town of Brookeville Ownership



Brookeville Boundary (area)



Market St. South Bound



- GATEWAY
- TRANSITION
- IN TOWN
- INTERSECTION

Town of Brookeville Comprehensive Plan

Update to Transportation, Pedestrian Networks & Streetscaping Elements

Public Right-of-Way



Maryland Property Boundaries



Parkland

- M-NCPPC
- Municipal
- State of Maryland
- WSSC
- Revenue Authority
- United States

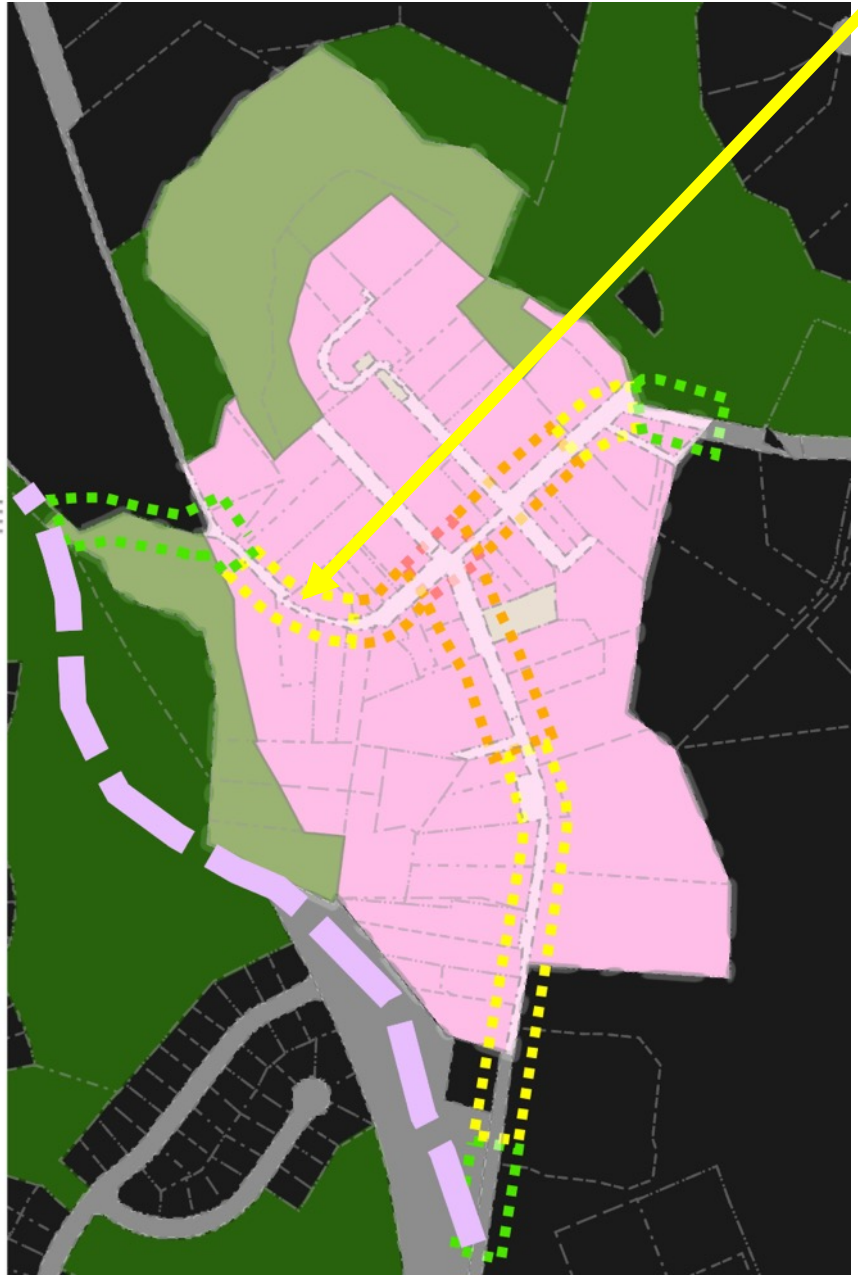
Town of Brookeville Ownership



Brookeville Boundary (area)



Market St. South Bound



Town of Brookeville Comprehensive Plan

Update to Transportation, Pedestrian Networks & Streetscaping Elements

Public Right-of-Way



Maryland Property Boundaries



Parkland

- M-NCPPC
- Municipal
- State of Maryland
- WSSC
- Revenue Authority
- United States

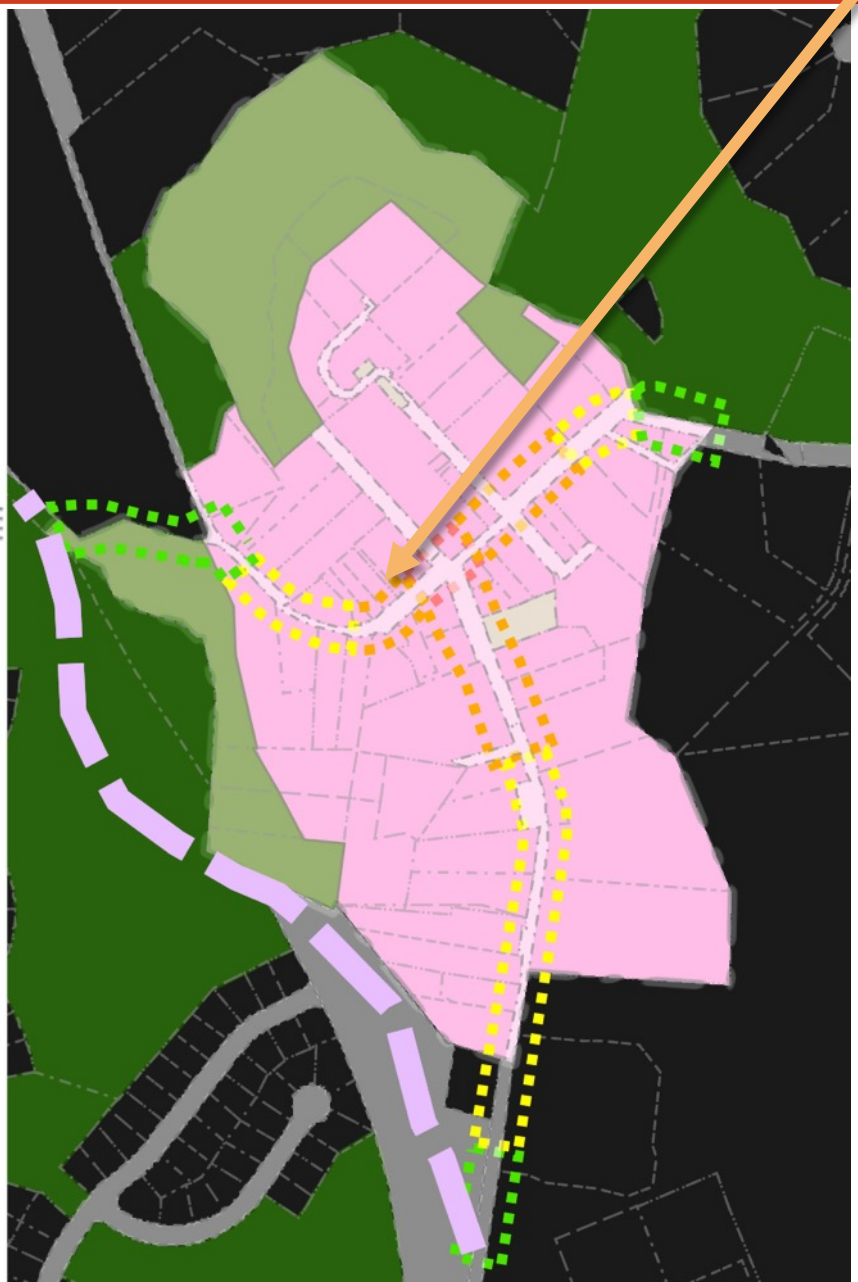
Town of Brookeville Ownership



Brookeville Boundary (area)



W. Market St. East Bound



Town of Brookeville Comprehensive Plan

Update to Transportation, Pedestrian Networks & Streetscaping Elements

Public Right-of-Way



Maryland Property Boundaries



Parkland

- M-NCPPC
- Municipal
- State of Maryland
- WSSC
- Revenue Authority
- United States

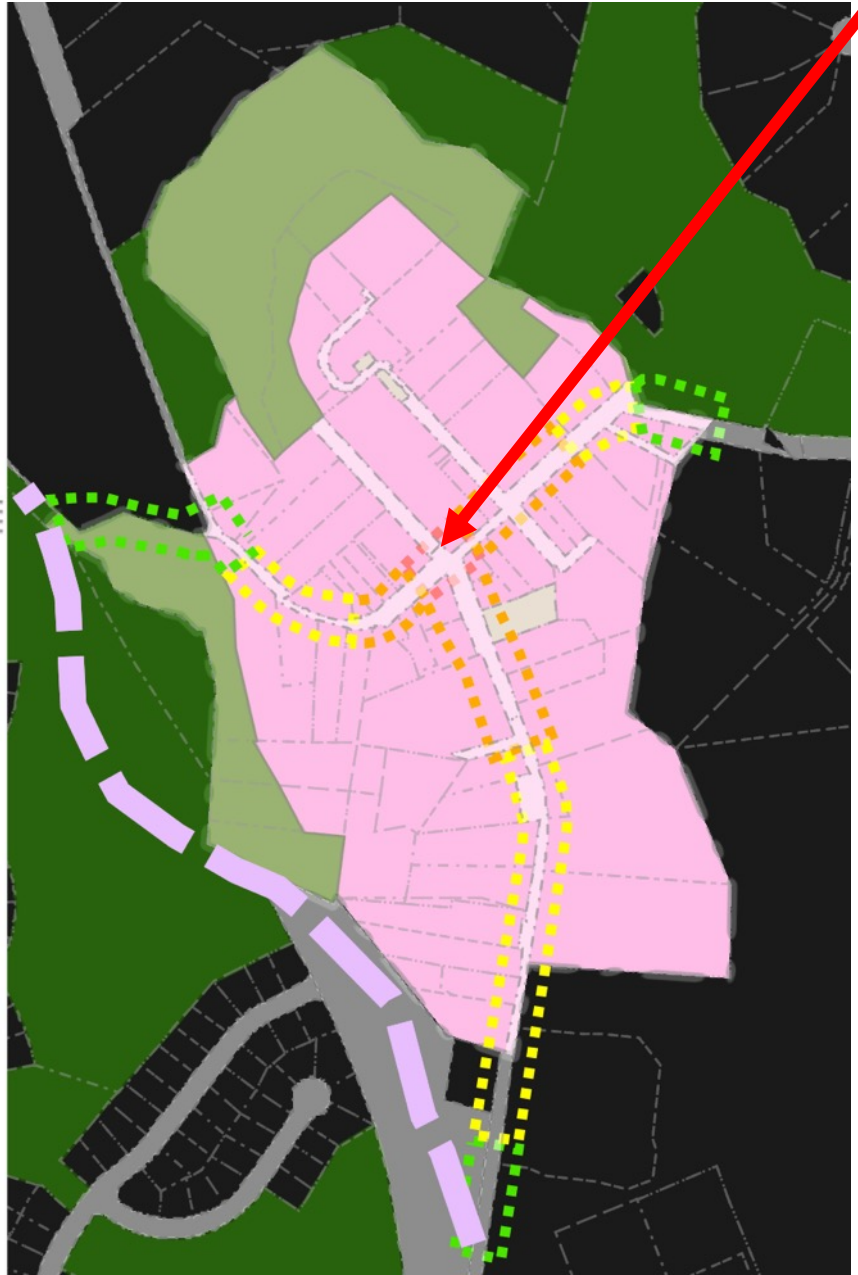
Town of Brookeville Ownership



Brookeville Boundary (area)



Market/High Intersection



Update to Transportation, Pedestrian Networks & Streetscaping Elements

Agenda

- 7:00 Introductions
Process, Questionnaire Snapshot,
Context
- 7:15 Discussion – three topics
1. Traffic Calming
 2. Streets and Sidewalks
 3. Public Spaces
- 8:15 General Q&A and Next Steps
- 8:30 Adjourn



Update to Transportation, Pedestrian Networks & Streetscaping Elements



Give **STRONG** visual clues to drivers that it is time to **S L O W** down

Gateway –

Distinctive entrance to town
Change from road to street

Transition

Narrow look and feel of the street
Horizontal shifts in alignment

In Town

Streets are for People and Placemaking

Update to Transportation, Pedestrian Networks & Streetscaping Elements

GATEWAYS

1) Wide
Landscaped
Splitter

2) Narrow
Landscaped
Splitter

3) Narrow brick
splitter

4) Narrow
painted splitter



Update to Transportation, Pedestrian Networks & Streetscaping Elements



SHOULDERS

- 1) Tinted asphalt
- 2) Optical speed bars (painted)
- 3) Flush Curb
- 4) Thick edgeline (painted)

Update to Transportation, Pedestrian Networks & Streetscaping Elements



<https://ladotbikeblog.wordpress.com>



<http://pedbikesafe.org>

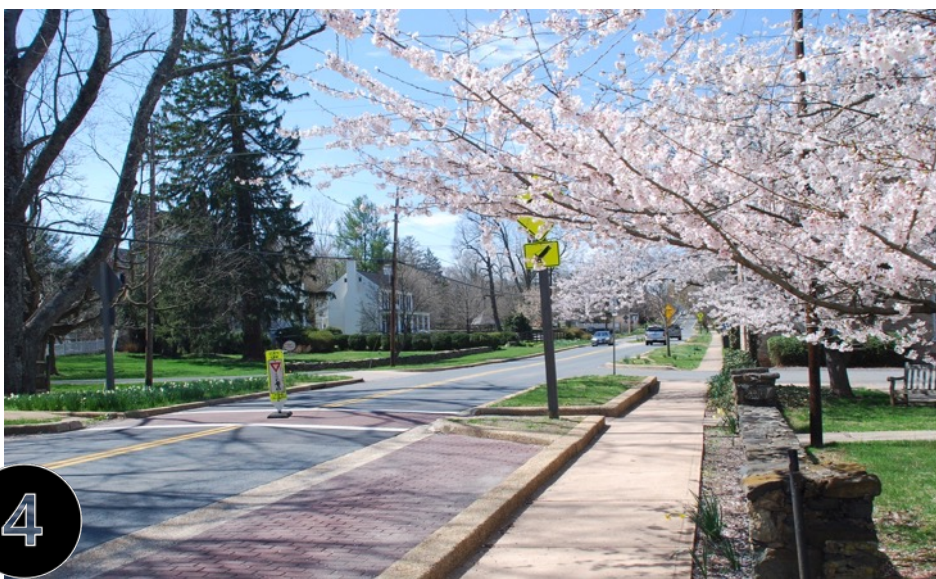
PHYSICAL INTERVENTION

1) Chicane with curb and gutter

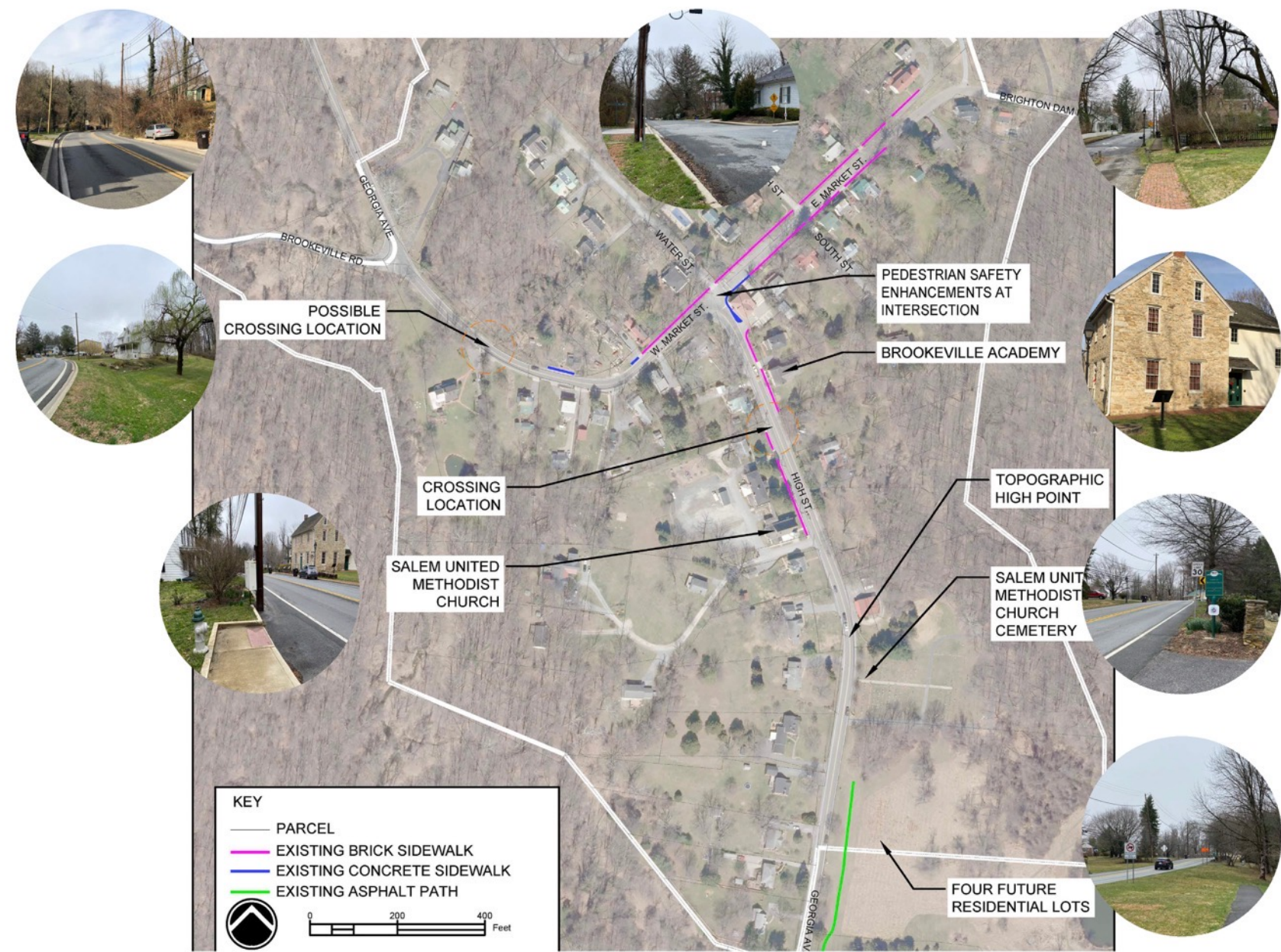
2) Chicane w/o curbs

3) Narrow Splitter with tinted curbs

4) Curb extension/pinch point at mid-block crossing



Update to Transportation, Pedestrian Networks & Streetscaping Elements



Pedestrian Facilities

Develop a continuous network of sidewalks and looped walking paths

Sidewalks and Crosswalks

Continuous sidewalks along High Street and Market

Potential crosswalk needed along West Market to extend sidewalk on both sides

From Salem Methodist Church parking to Brookeville Academy

Update to Transportation, Pedestrian Networks & Streetscaping Elements



1



2



3



4

Sidewalk/Curb

1) Brick with concrete curb

2) Concrete with concrete curb

3) Brick with planting strip concrete curb and gutter

4) brick with stone curbing

Update to Transportation, Pedestrian Networks & Streetscaping Elements



Crosswalks

1) Imprinted/
tinted asphalt
with ladder
striping

2) Imprinted
asphalt standard
striping

3) Bricks with
flush concrete

4) Median refuge
with pavers



Update to Transportation, Pedestrian Networks & Streetscaping Elements



Intersection (s)

1) Brick crosswalks on all four legs

2) Brick pavers in intersection



3) Concrete pavers patterns in intersection

4) Mini-roundabout

Update to Transportation, Pedestrian Networks & Streetscaping Elements



Capture Public Space:
Market/Water/High
Street intersection to
help reinforce concept
that streets are for
people

Define Brookeville
Academy green space
as focal point for
community

In Town
East Market/West
Market/High/Water

Update to Transportation, Pedestrian Networks & Streetscaping Elements



Public Space

1) Tree grove with grass lawn

2) Pavilion with grass lawn and trees



3) Gazebo and brick terrace

4) formal lawn with raised terrace at back

<https://www.golaurelhighlands.com/blog/post/presidential-places/>

<https://www.rosemarycoldstream.com/portfolio/formal-town-garden-welwyn-garden-city/>

Update to Transportation, Pedestrian Networks & Streetscaping Elements



Market/High

1) Island with monument

2) Mini-roundabout with public art

<https://www.autoexpress.co.uk/car-news/108002/the-uk-s-best-roundabouts-what-s-your-favourite>



3) Raised intersection brick crosswalks

4) Raised intersection - brick

<https://nacto.org/publication/urban-street-design-guide/intersections/minor-intersections/raised-intersections/>

<https://globaldesigningcities.org/publication/global-street-design-guide/>

Update to Transportation, Pedestrian Networks & Streetscaping Elements



Give **STRONG** visual clues to drivers that it is time to **S L O W** down

Gateway –

Distinctive entrance to town
Change from road to street

Transition

Narrow look and feel of the street
Horizontal shifts in alignment

In Town

Streets are for People and Placemaking

Update to Transportation, Pedestrian Networks & Streetscaping Elements

<i>Anticipated Schedule</i>	2021
BRAINSTORMING <ul style="list-style-type: none"><i>Kickoff Tour with Planning Commission/Commissioners</i><i>Preliminary Vision and Goals</i>	April
COMMUNITY VISIONING <ul style="list-style-type: none"><i>Public Visioning Session (Virtual)</i>	May
GOALS AND STRATEGIES <ul style="list-style-type: none"><i>Develop ideas into specific goals and strategies (preliminary plan)</i><i>Community Planning Workshop(Virtual)</i>	June
DEVELOP PLAN <ul style="list-style-type: none"><i>Draft Plan and Implementation Priorities</i><i>Review and Revise Plan</i>	July



Update to Transportation, Pedestrian Networks & Streetscaping Elements

Five Ways to Get Involved

- [QUESTIONNAIRE](#)
- [MAP YOUR IDEAS](#)
- [TAKE A MAP TOUR](#)
- [SHARE YOUR THOUGHTS](#)
- **ATTEND THE VIRTUAL COMMUNITY MEETING**

<https://www.lardnerklein.com/brookevillemdplanupdate>

